

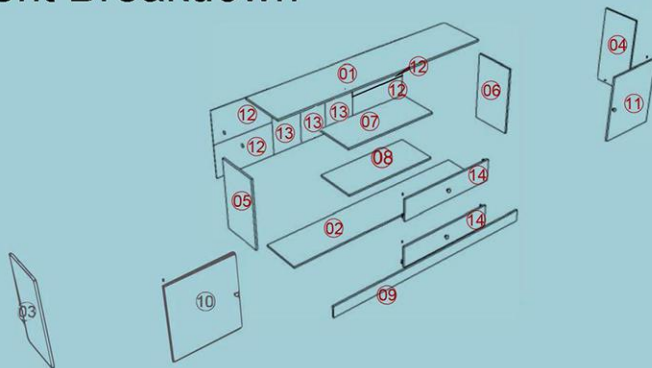
TV009 Installation Instruction



Please be sure to use a manual screwdriver and refrain from using an electric drill.



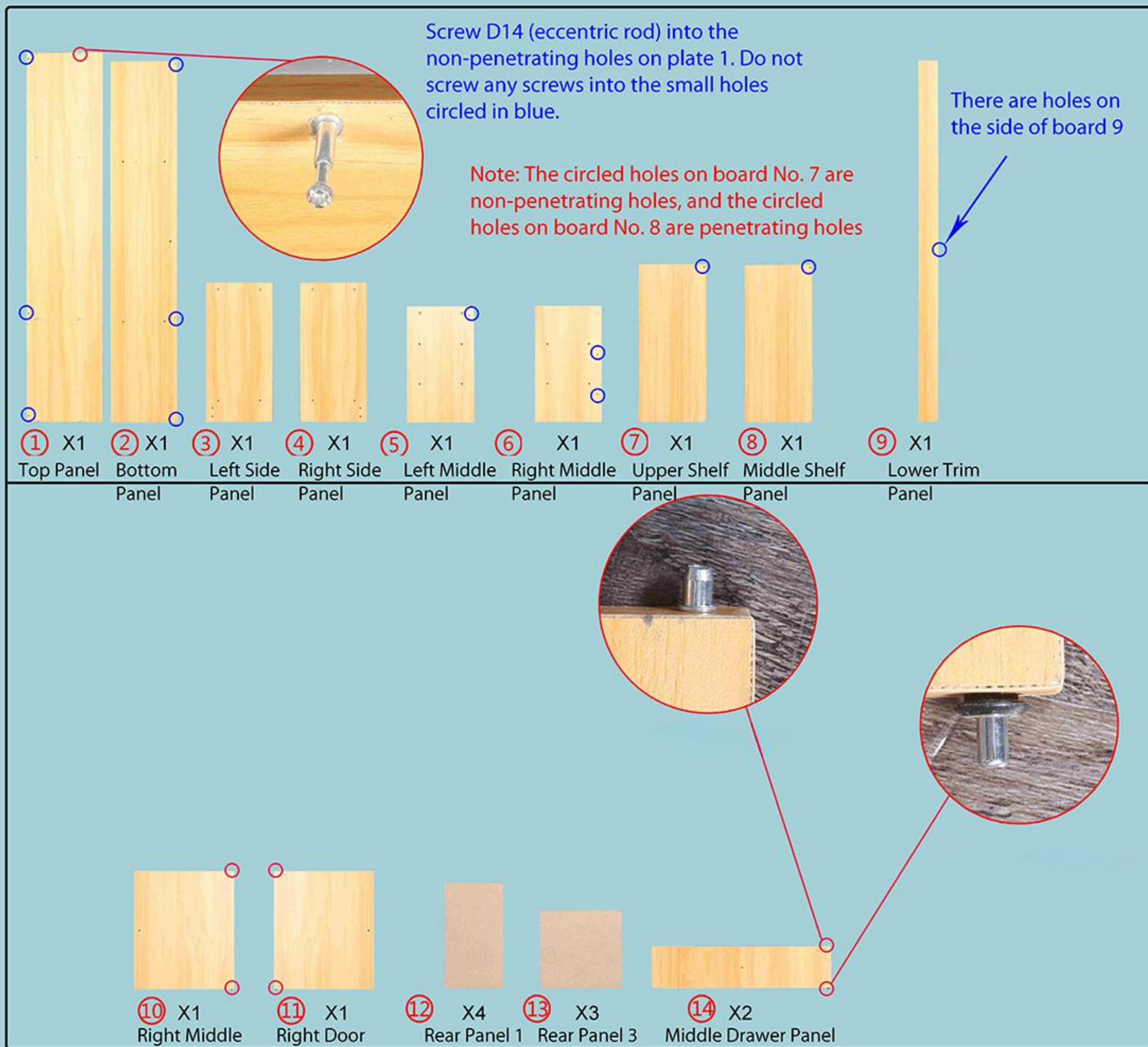
Component Breakdown



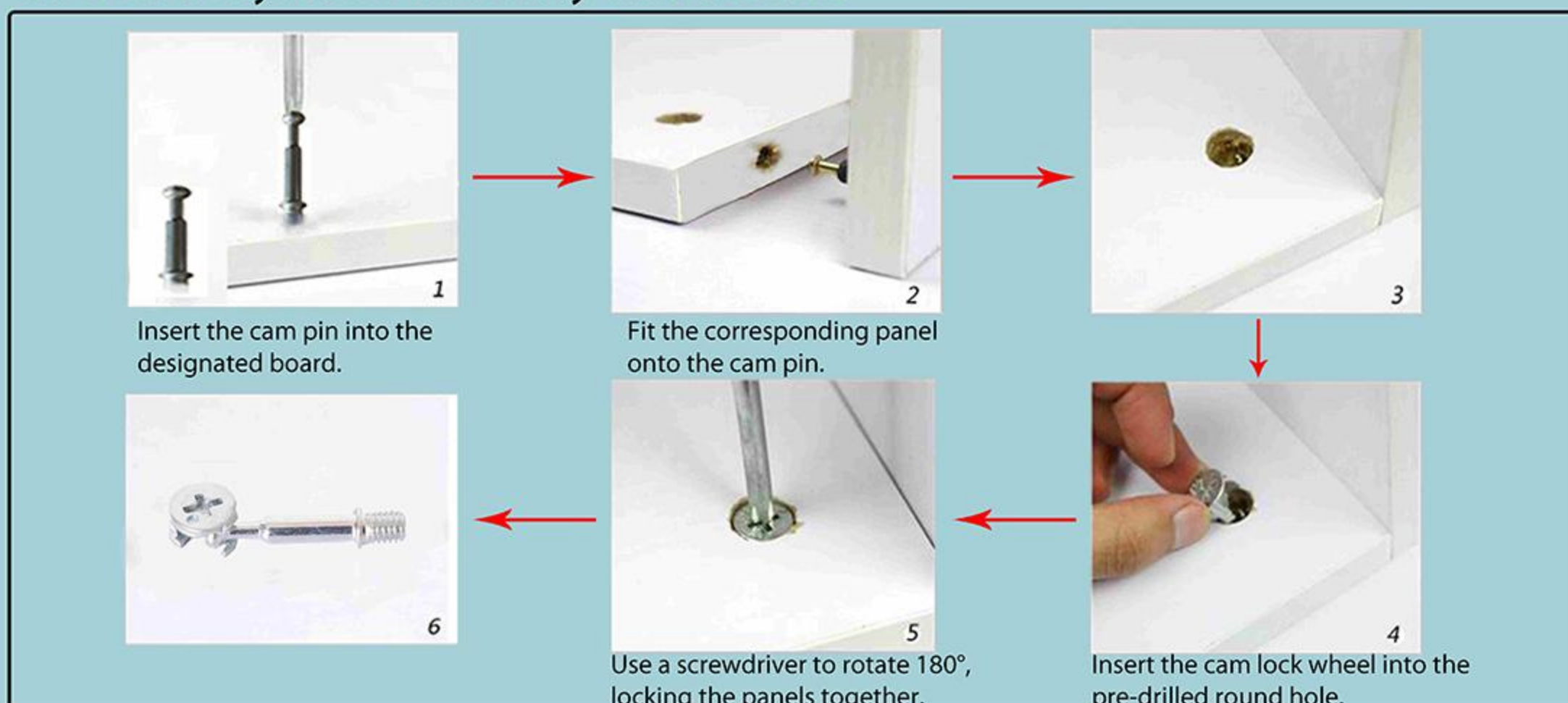
Cam Lock System (Pin + Wheel)	Metal Shelf Pin	4x40 mm Screws	Spring Shelf Support Pin	Wooden Knob Handles	4x16 mm Handle Screws	Small Nails	Screwdriver
D14 × 9	K0 × 9	B4 × 23	L8 × 4	J11 × 4	B8 × 5	K20 × 38	1

Reminders Before Assembly:

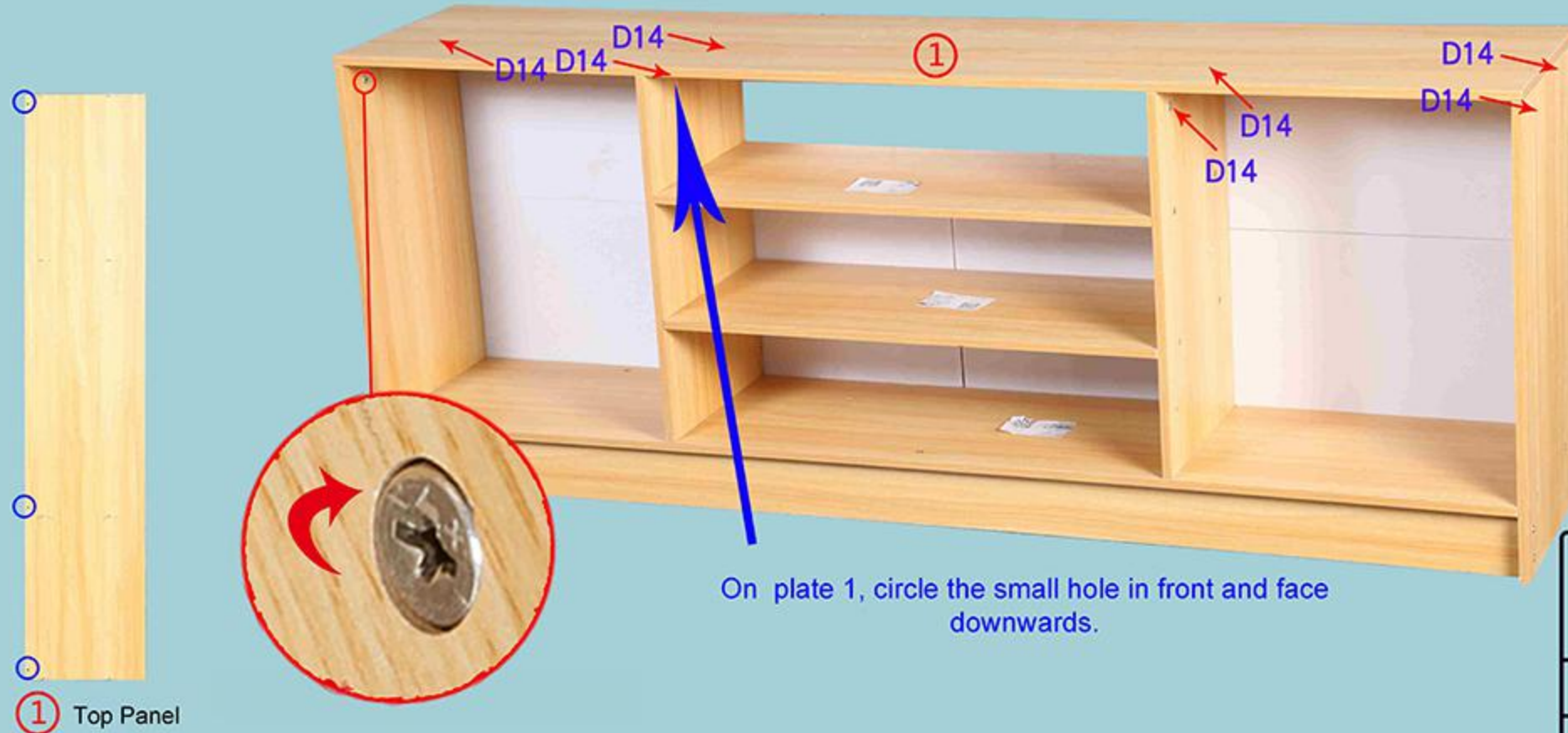
- Identify each panel by matching it with the diagrams.
- Follow the assembly sequence; do not overtighten screws initially.
- Panels with red markings indicate orientation (front-facing or direction).
- Product color and grain may vary slightly from the images.



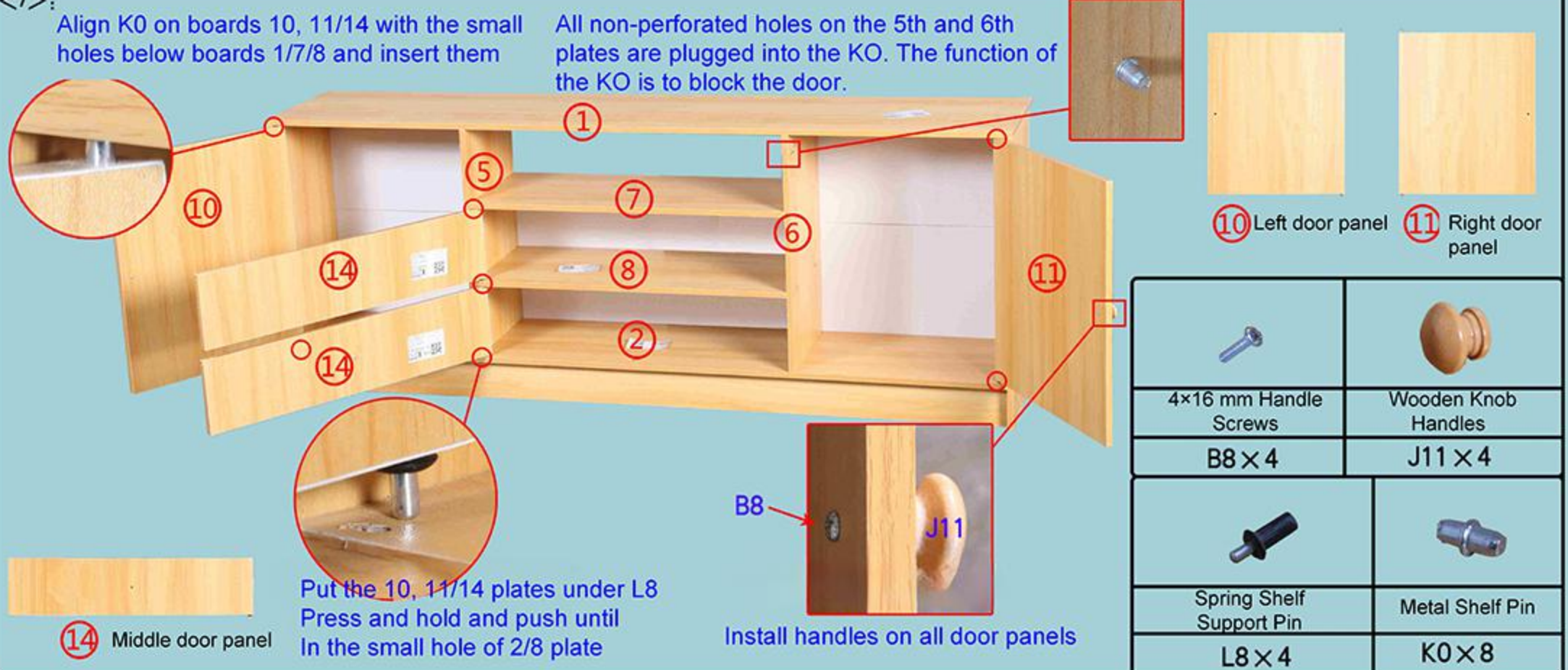
Cam Lock System Assembly Instructions



<6>:



<7>:



<8>:

