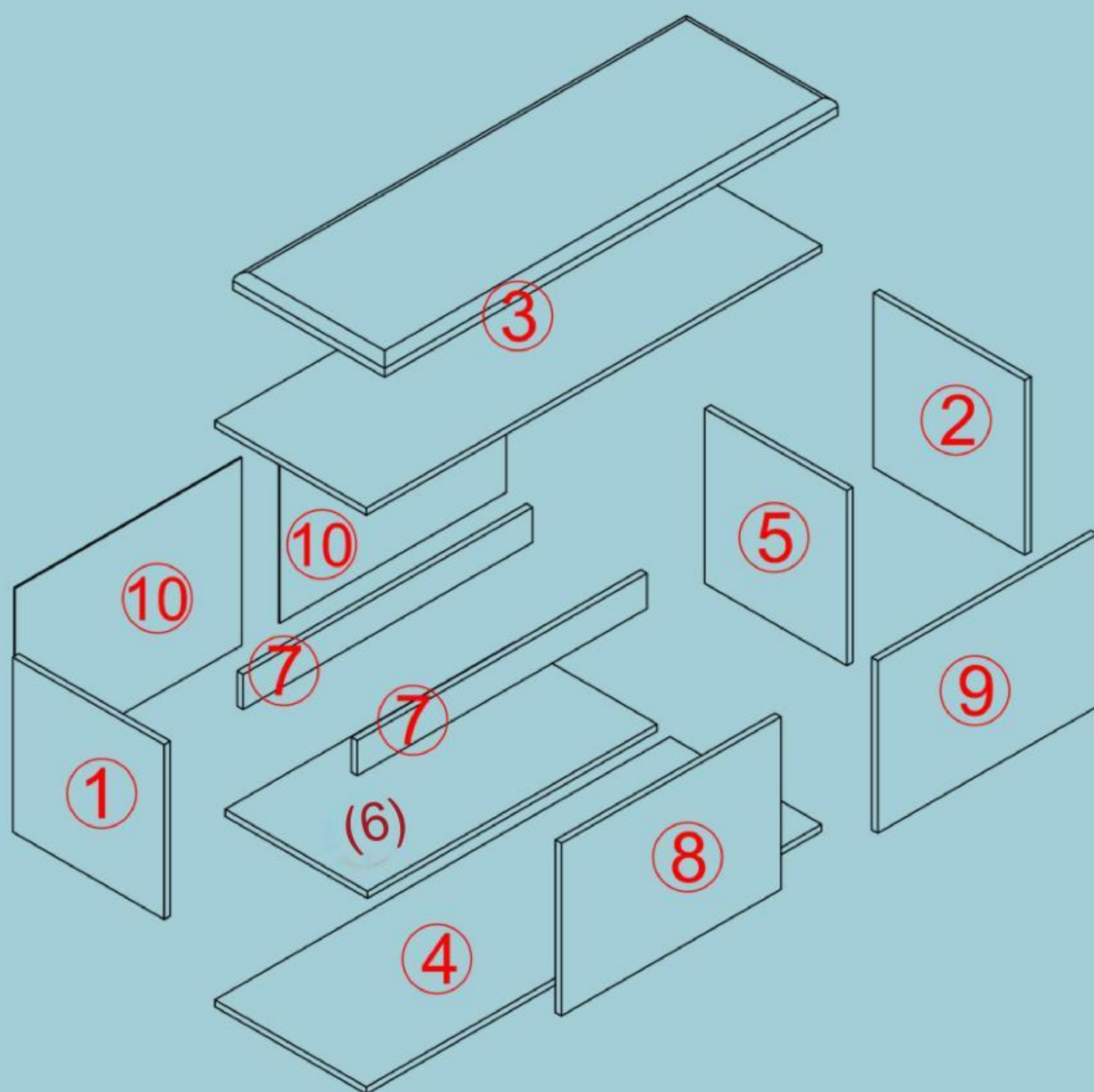


HXD0035K01-A

Product accessories and quantity · Integral and partial installation

Eccentric piece installation steps



1. Product accessories and quantity (it is recommended to put more spare screws)

			
4*40 self-tapping screws	small nails	Eccentric wheel + eccentric rod	3.5*12 self-tapping screws
B4*20 (includes 2 spares)	K20*20 (includes 2 spare pieces)	D14*9 (includes 1 spare)	A1*24 (includes 2 spares)
			
Black short straight aluminum handle	4*14 handle screw	Built-in door catch	Iron partition pin
J39*2	B14*5 (includes 1 spare)	L18*1	KO*3 (includes 1 spare)
			
metal legs	Single hole door iron absorber-2	Spring spacer pin	
M24*5	L24*2	L8*2	
			
screwdriver			
1			

Kind tips:

1. When installing, please refer to the drawings to distinguish the boards.

The color of the product is not subject to the instructions;

2. Tighten the screws 70%, and then tighten them after everything is completed!

3. Some boards have a red side, and the red side faces down or inward.

4. Please read all the drawings before proceeding with installation.

5. If there are extra screw accessories, they are spare screws provided by the manufacturer!

2. Installation steps of eccentric parts



Screw the eccentric rod to the board



Find the corresponding board and insert it



find round hole



Insert the eccentric wheel into the round hole



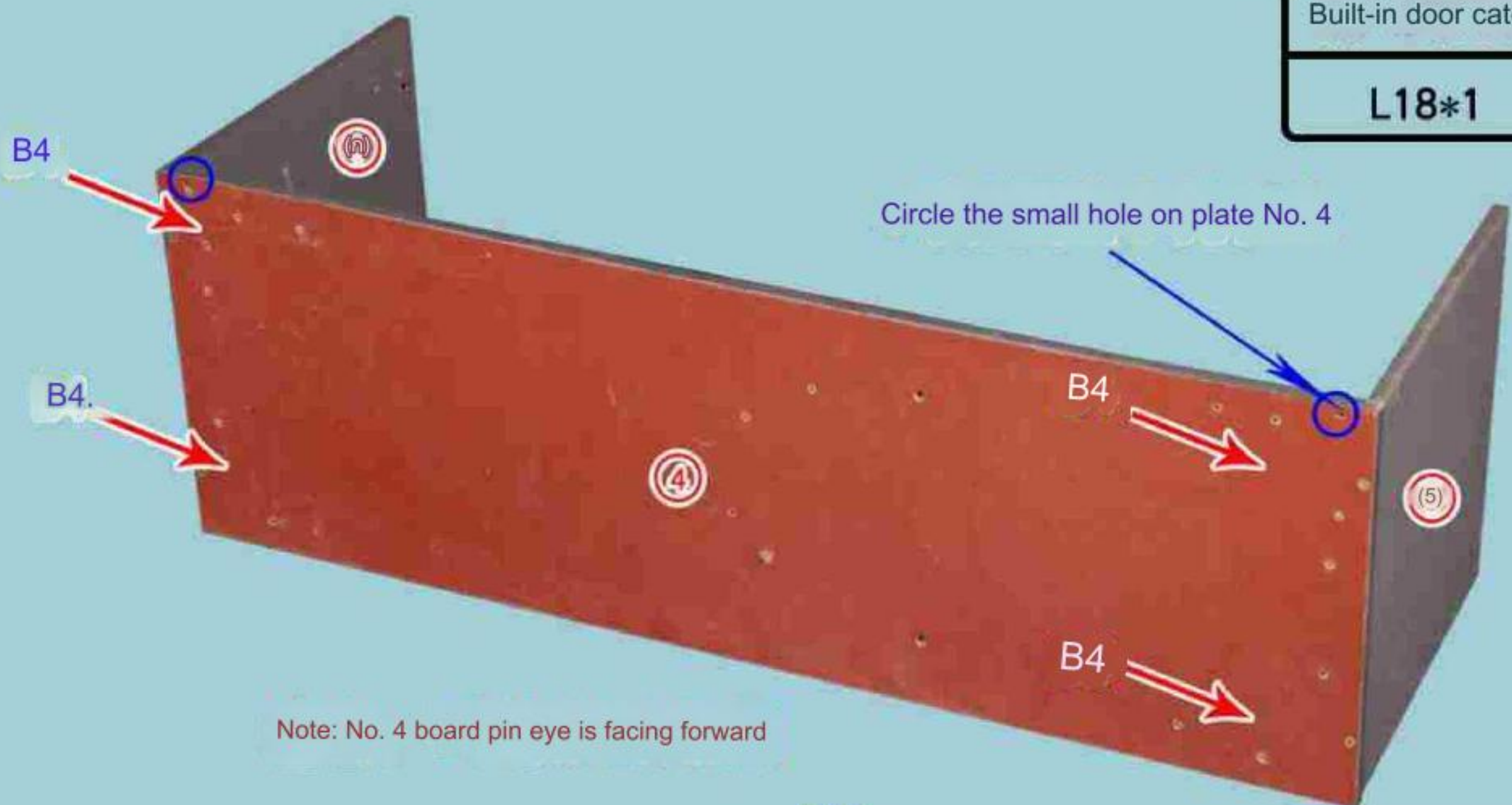
Rotate 180° clockwise to lock
the board left and right



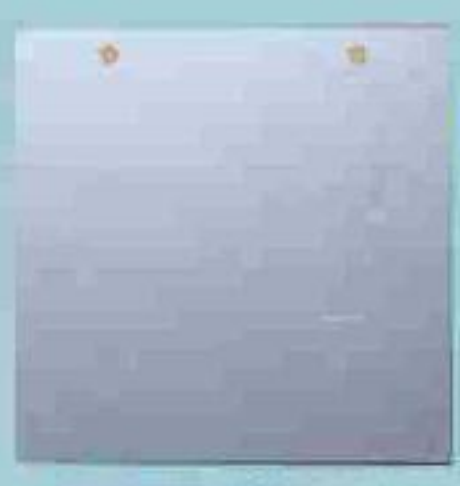
3. Start the installation: overall and partial installation

<1>


Built-in door catch
L18*1



① Left side panel



⑤ Right side panel



④ Bottom plate

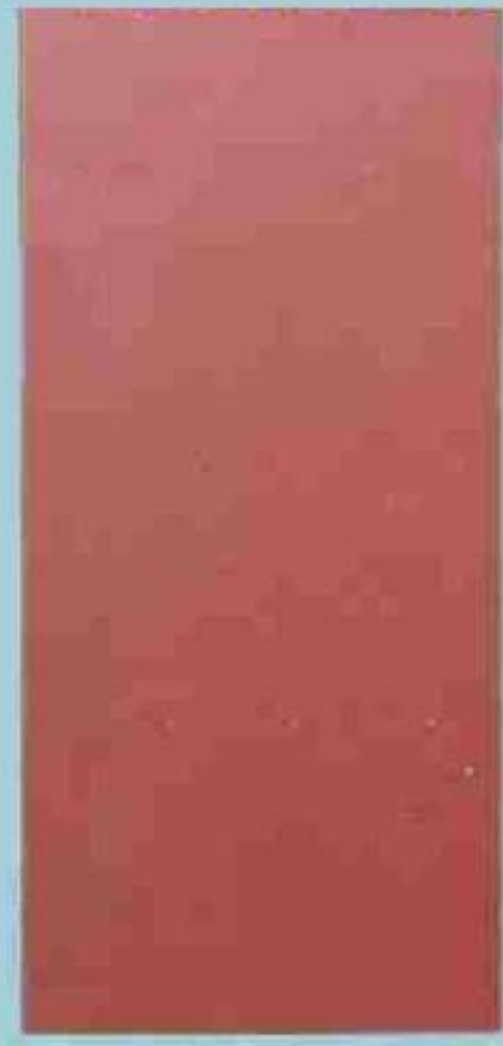

4*40 self-tapping screws
B4*4

<2>

Screw D14 (eccentric rod) into the non-penetrating holes on No. 3 board



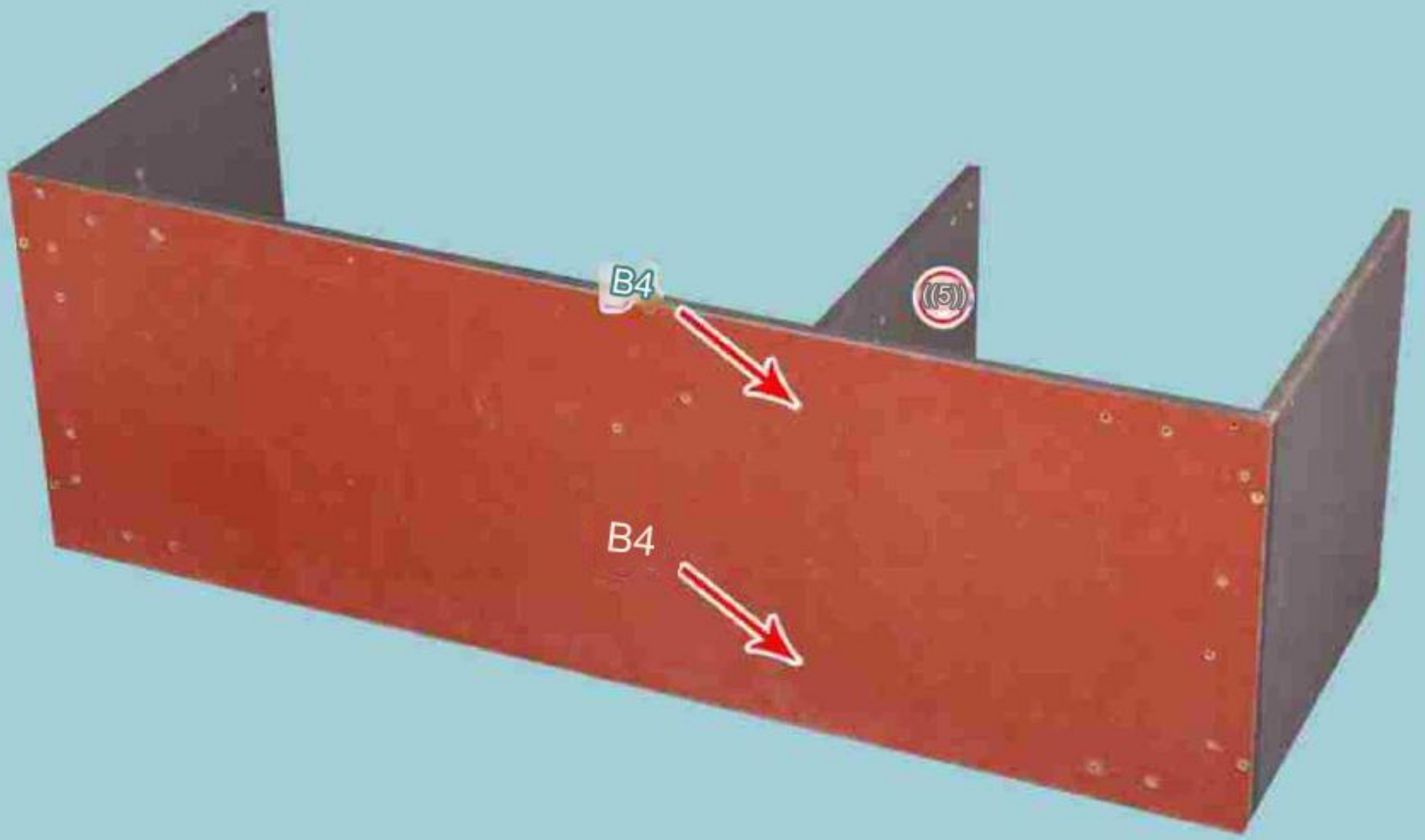
③ Top plate



⑥ Shelves


Eccentric rod
D14*8

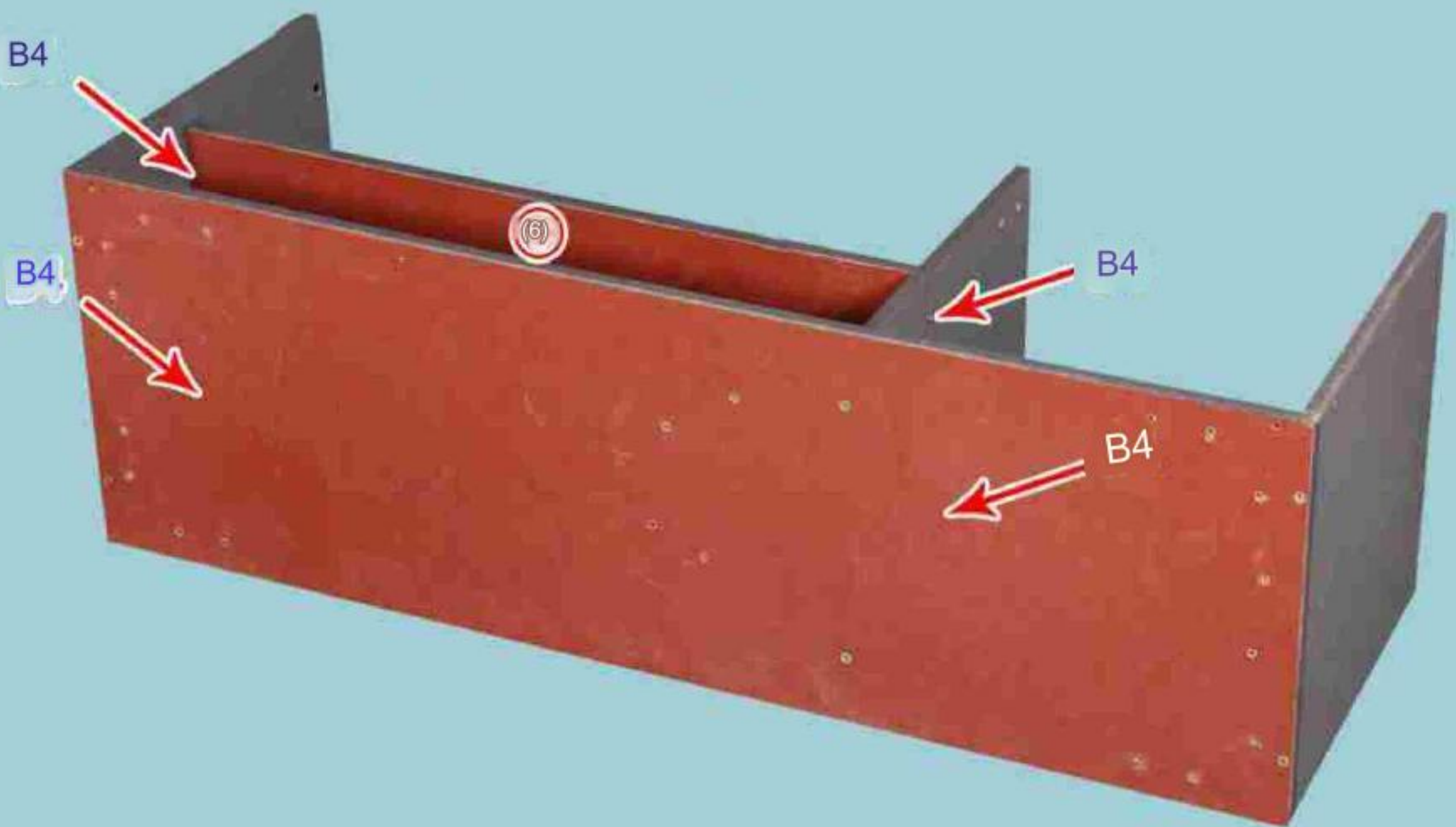
<3>



⑤ Middle riser board



<4>

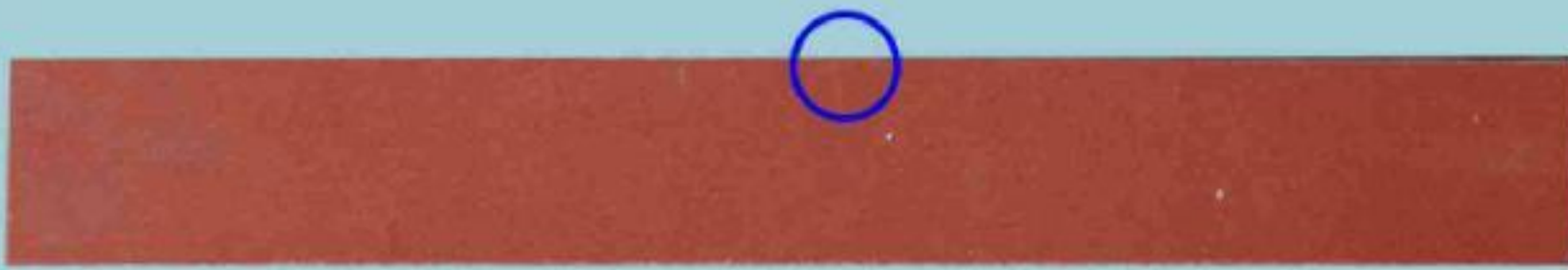
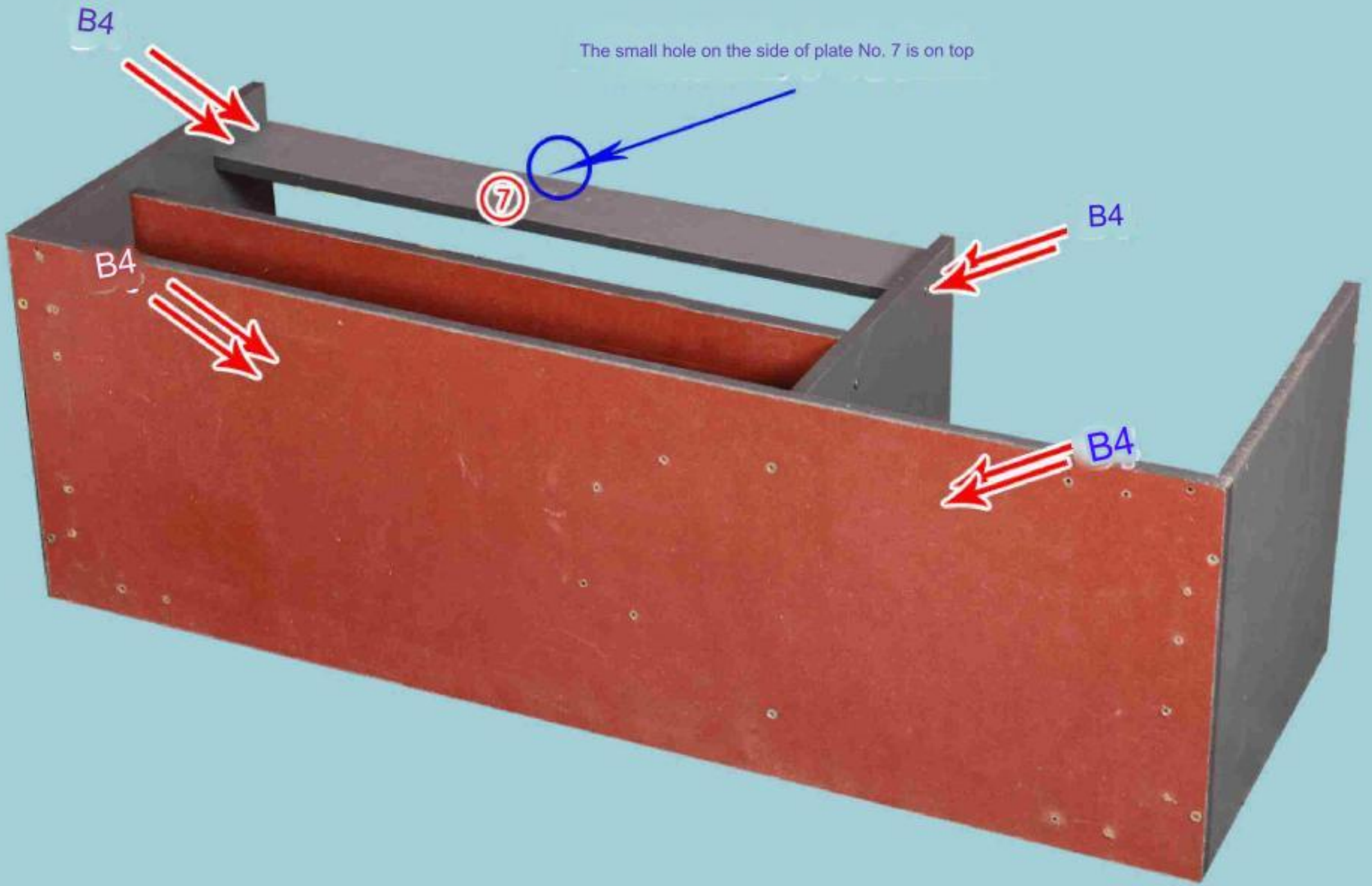


⑥ Laminate



<5>

Install two No. 7 boards

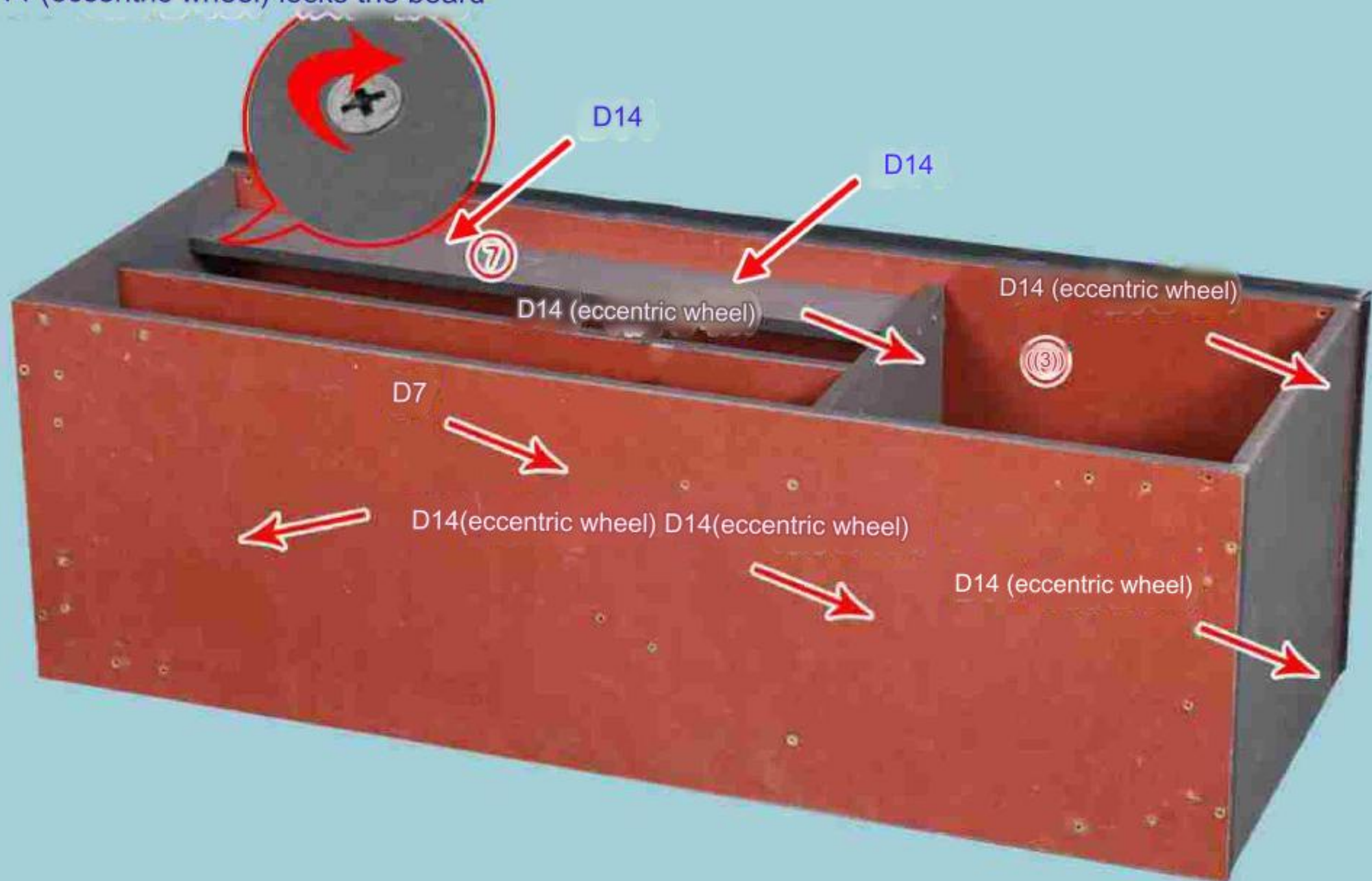


⑦ Pull plate



Insert D14 (eccentric wheel)
clockwise rotation

D14 (eccentric wheel) locks the board



③ Top plate



<7> Whole flip

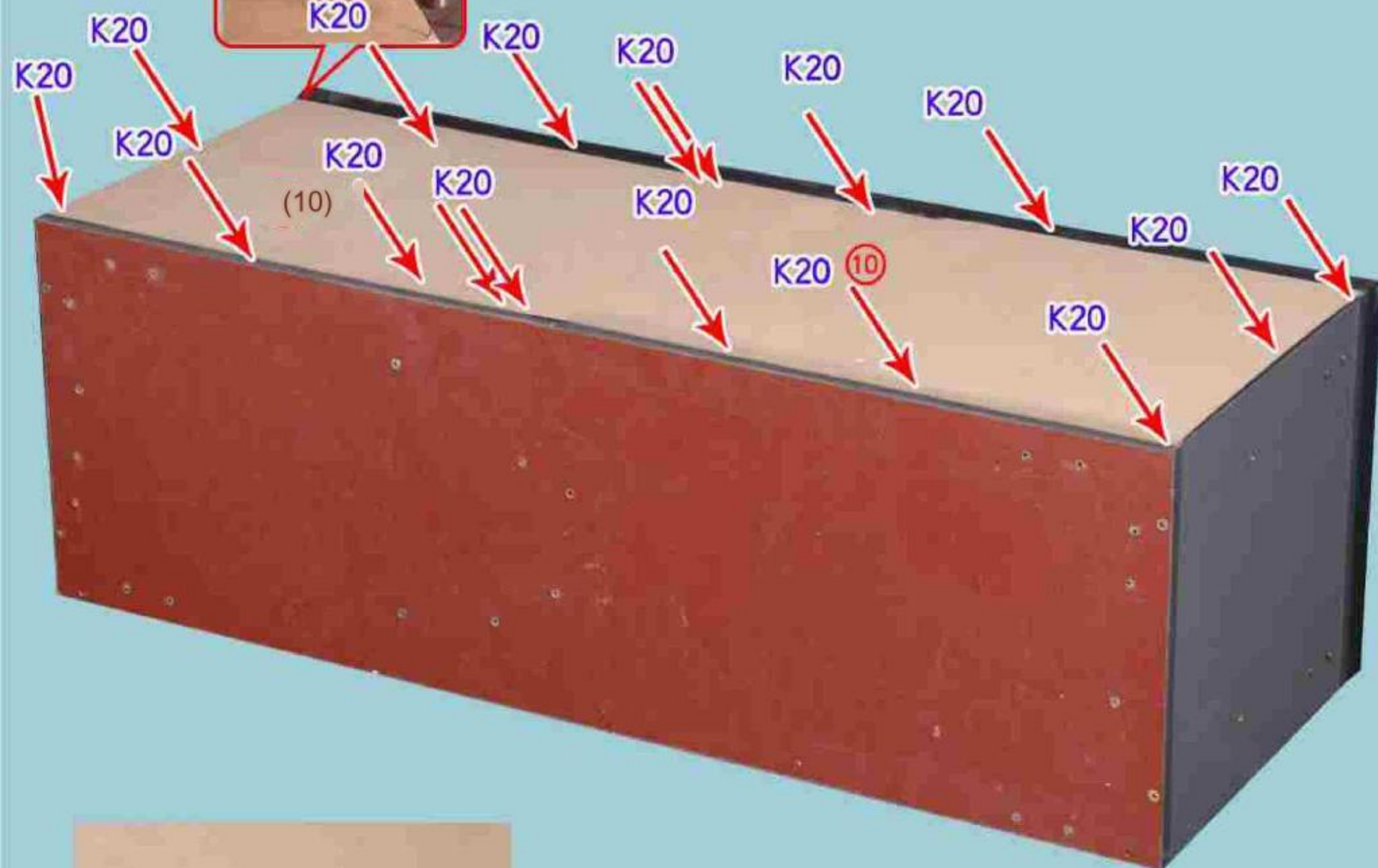
Knock in the K20 with a tool hammer

(You need to bring your own tool hammer)



Dear, for the sake of beauty, it is recommended to use tape to close

the gap on the back panel until it is flush (you need to bring your own tape)

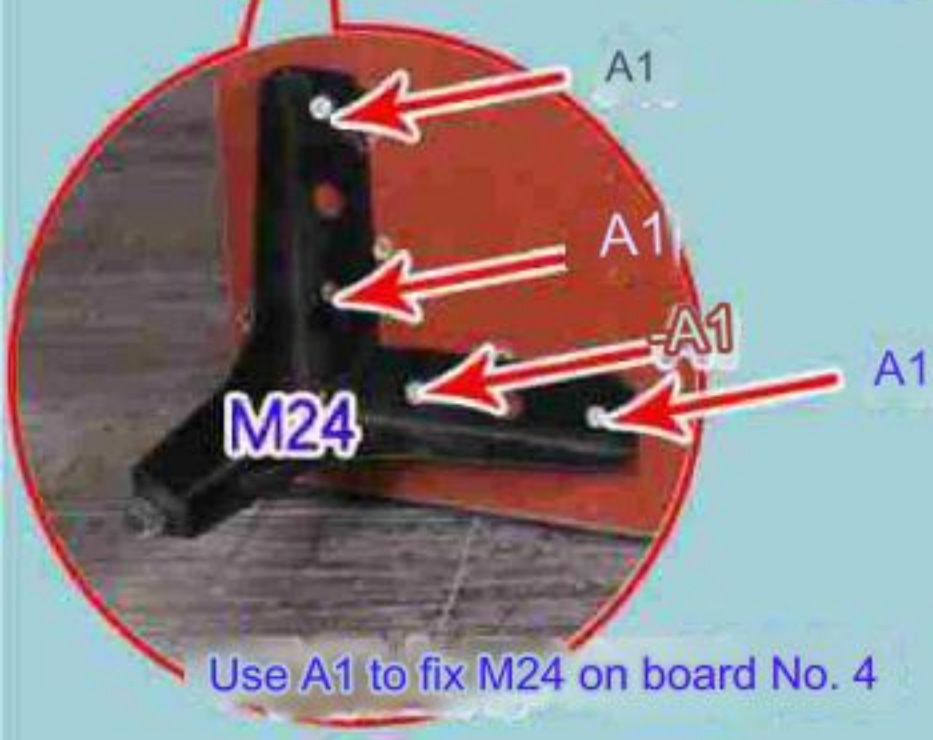


① Back panel

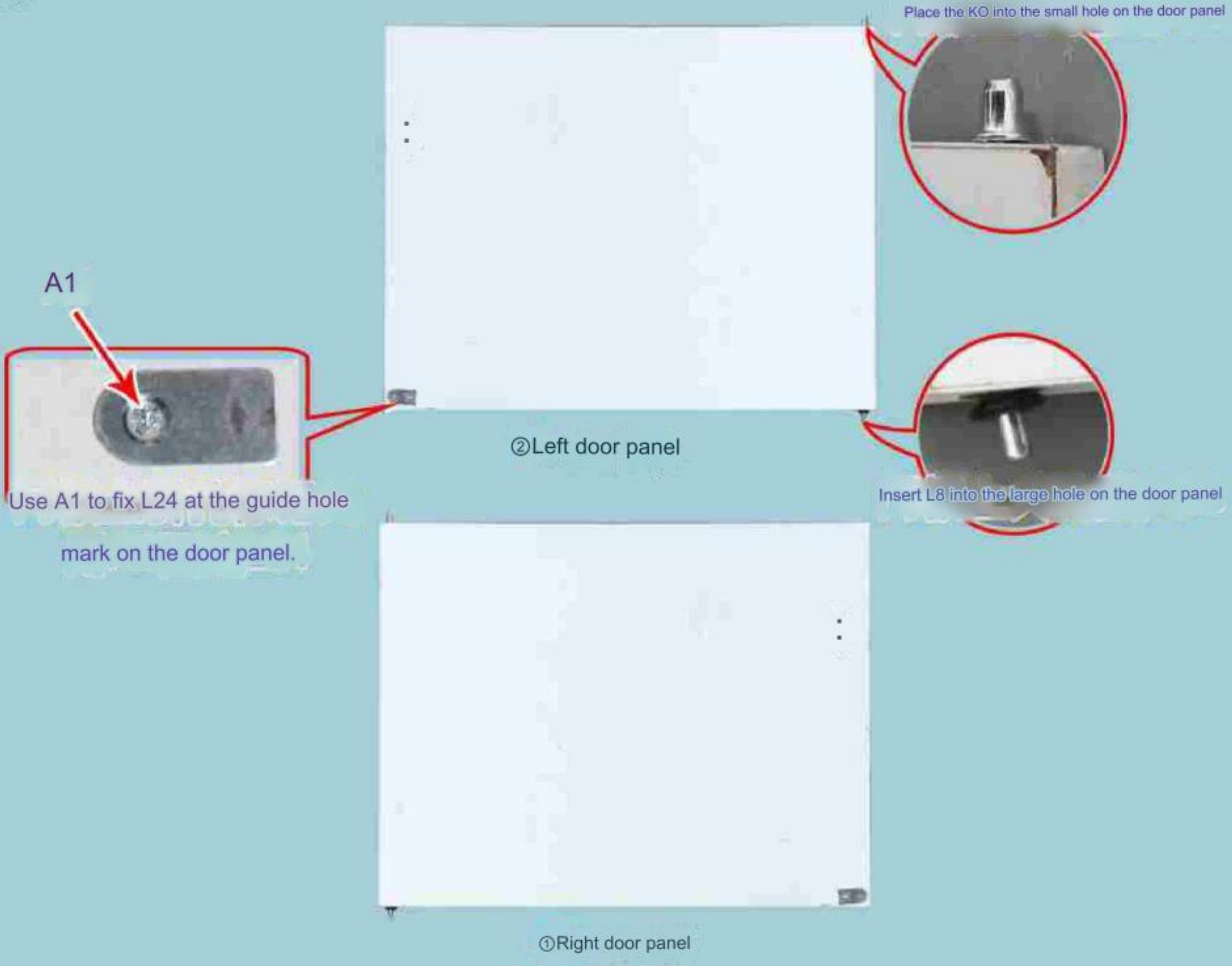




<8> Whole flip



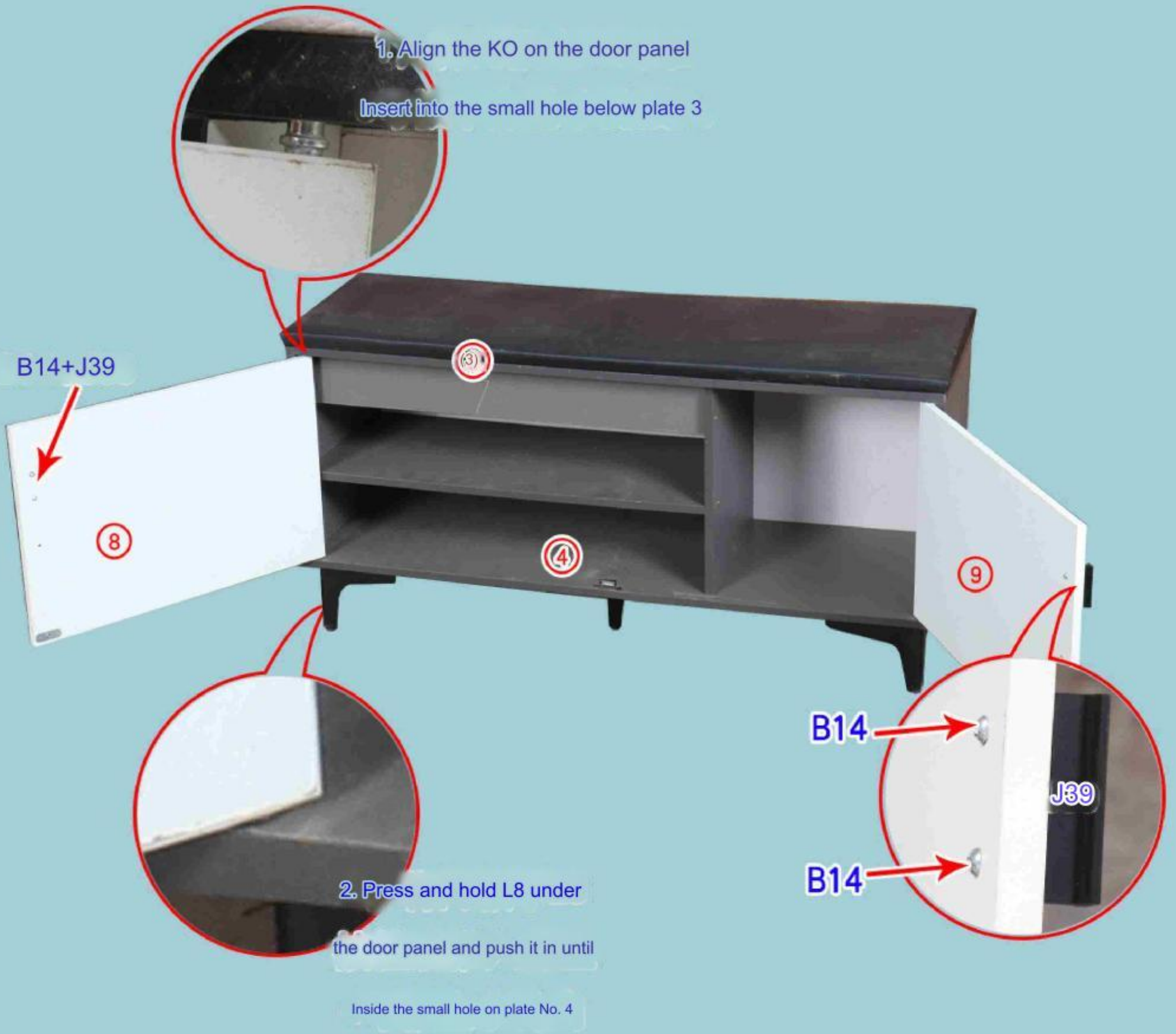


A	
metal legs	3.5*12 self-tapping screws
M24*5	A1*20

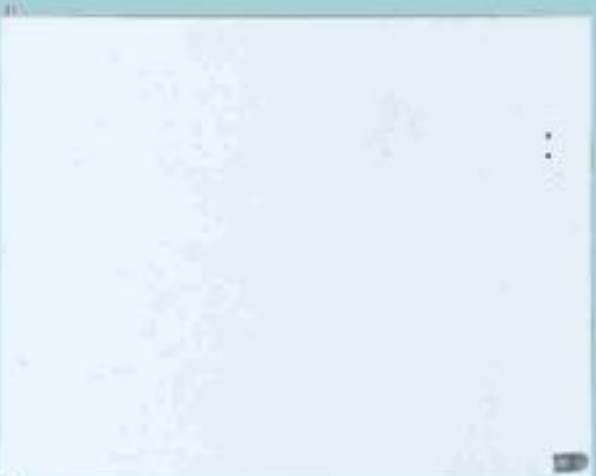


			
3.5*12 self-tapping screws	Single hole door iron absorber-2	Spring spacer pin	Iron partition pin
A1*2	L24*2	L8*2	KO*2

Straighten the whole



⑧ Left door panel



⑨ Right door panel

Black short straight aluminum handle	4*14 handle screw
J39*2	B14*4

