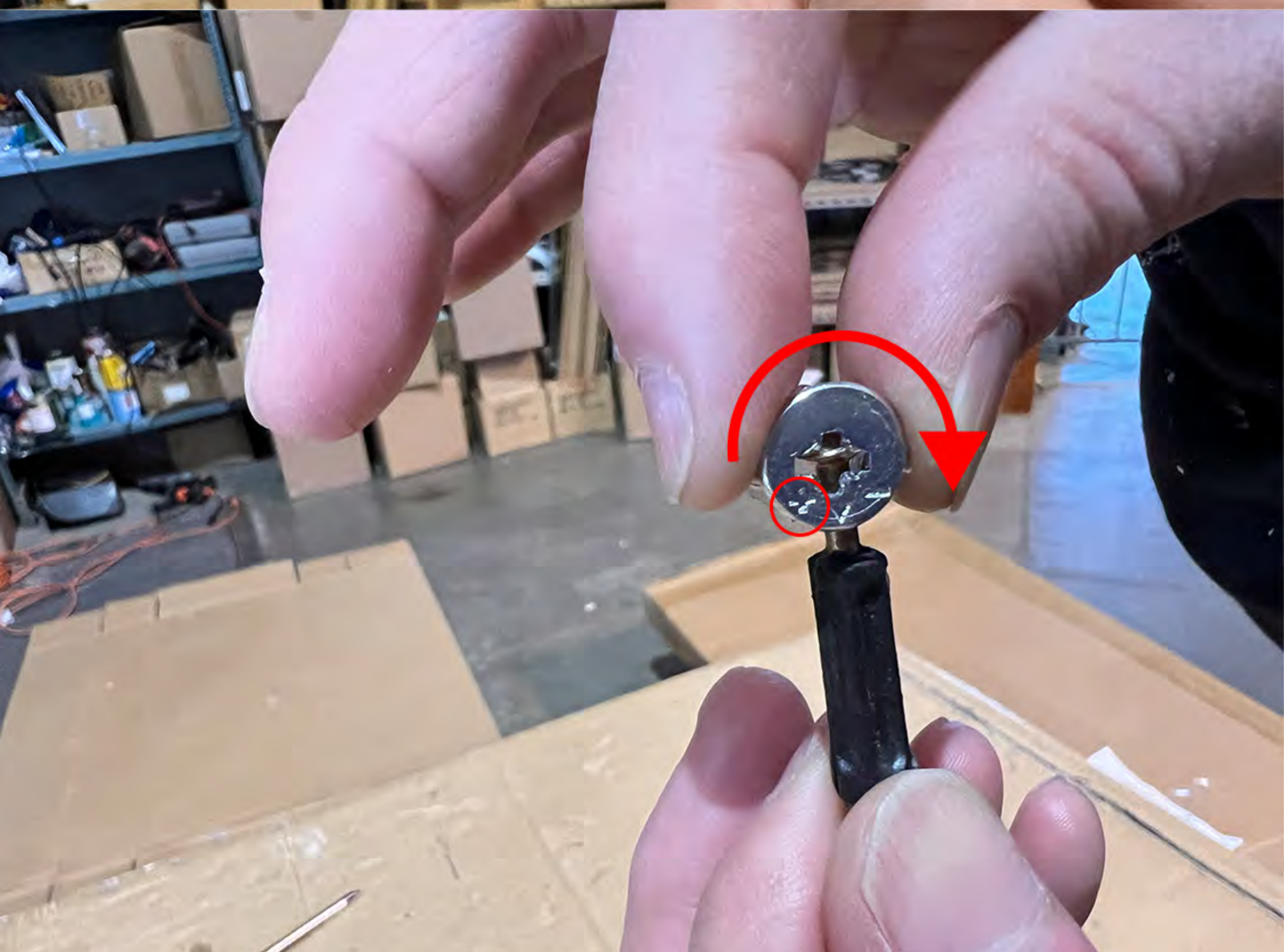
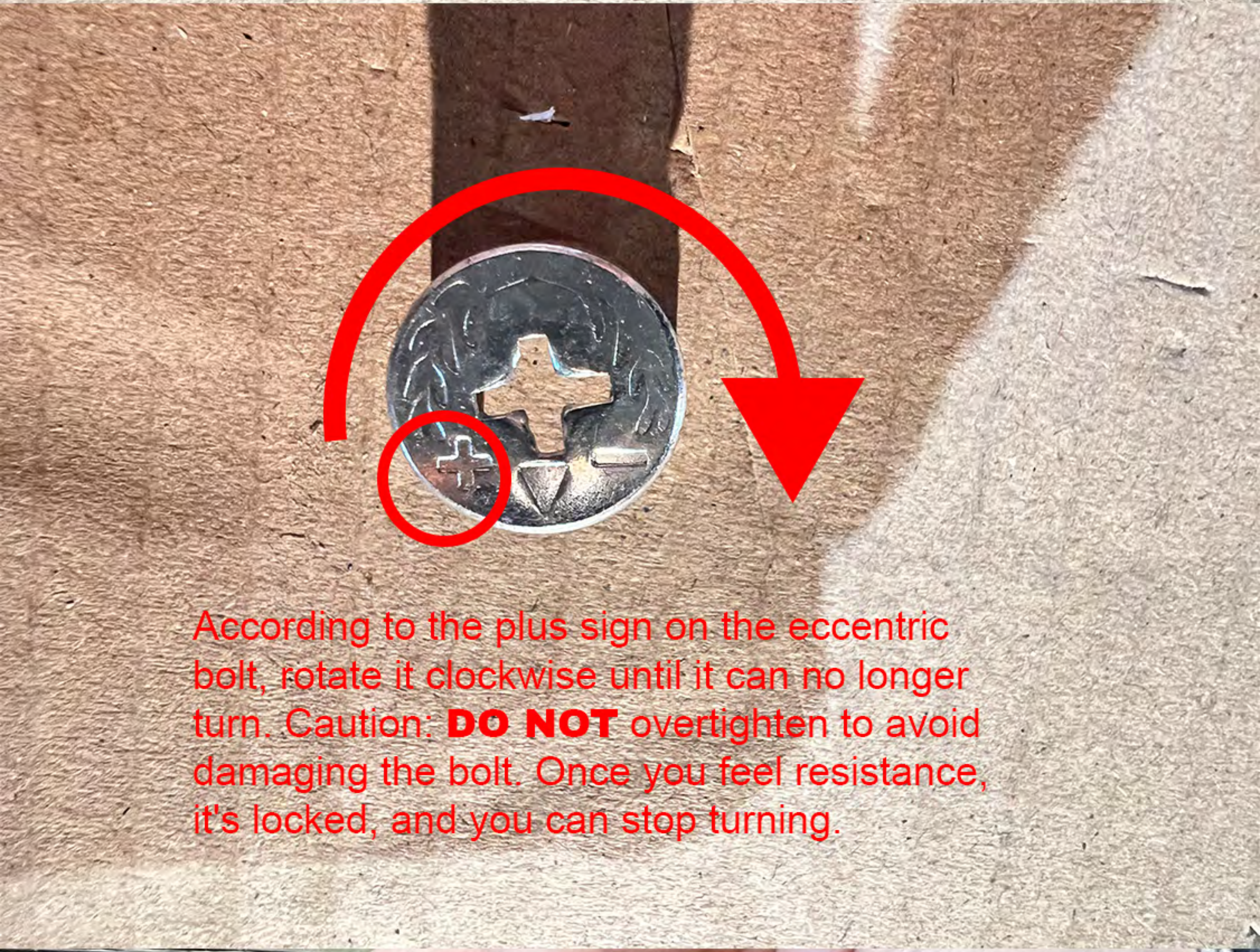
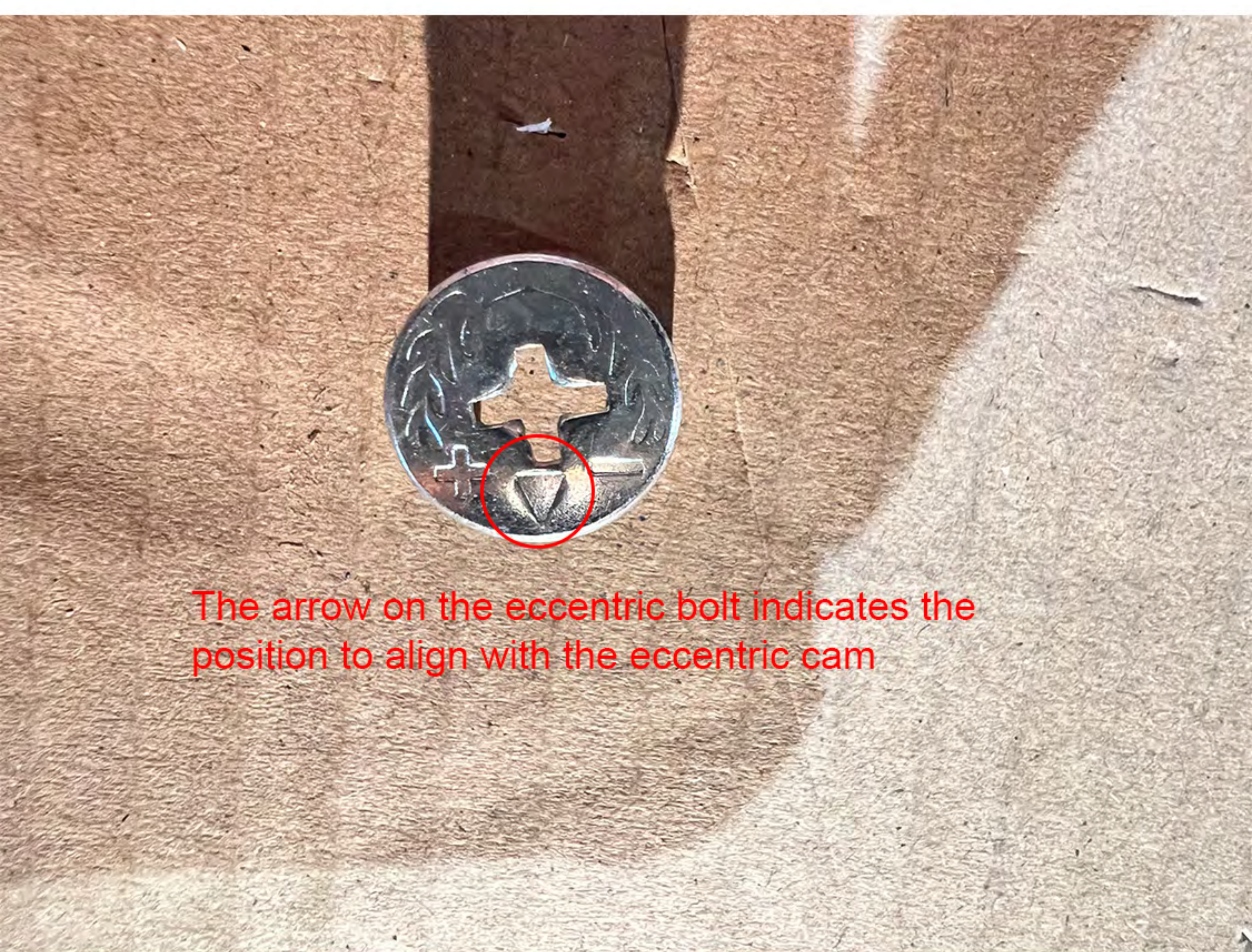


SOCE052-80CM

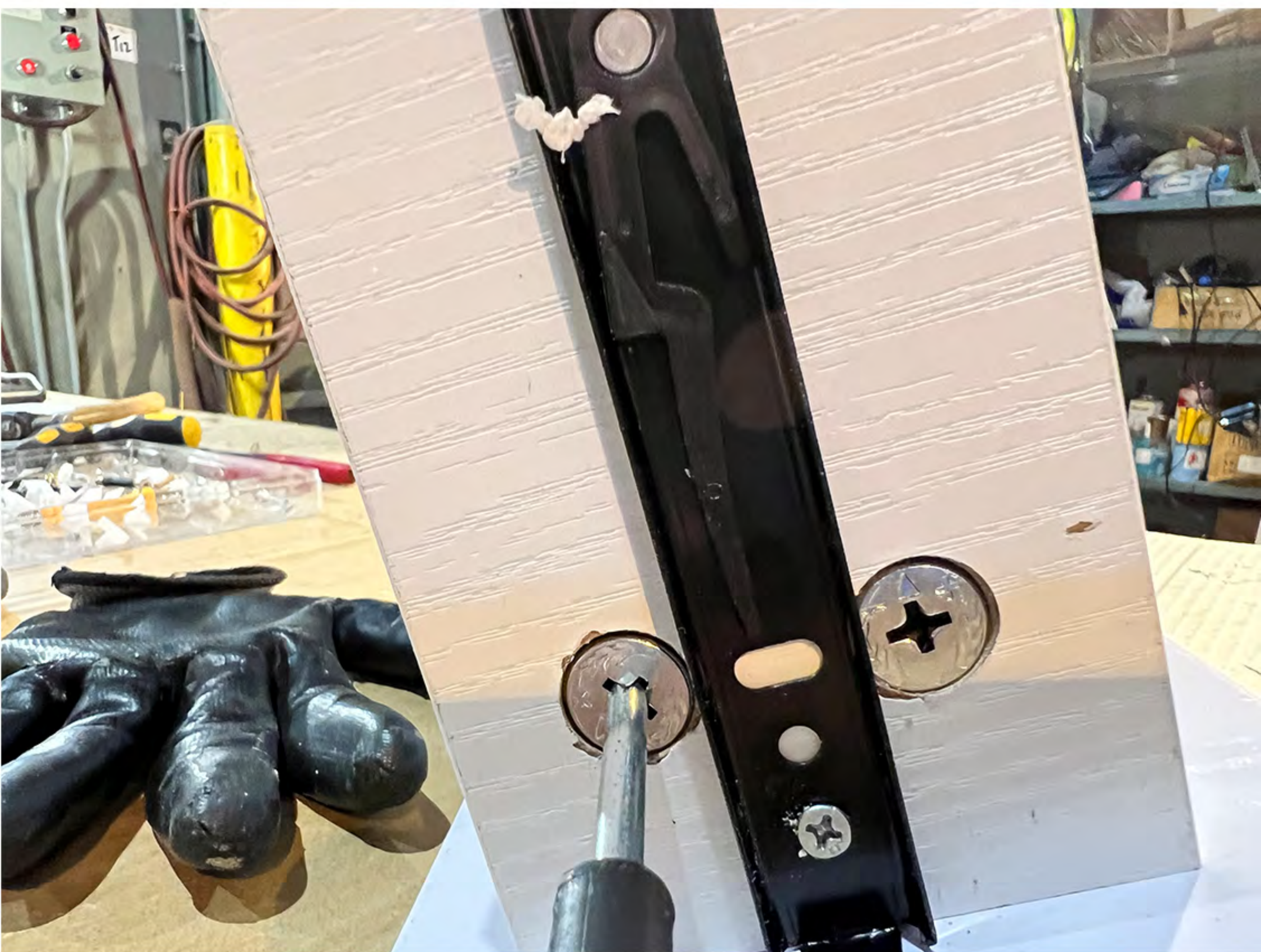
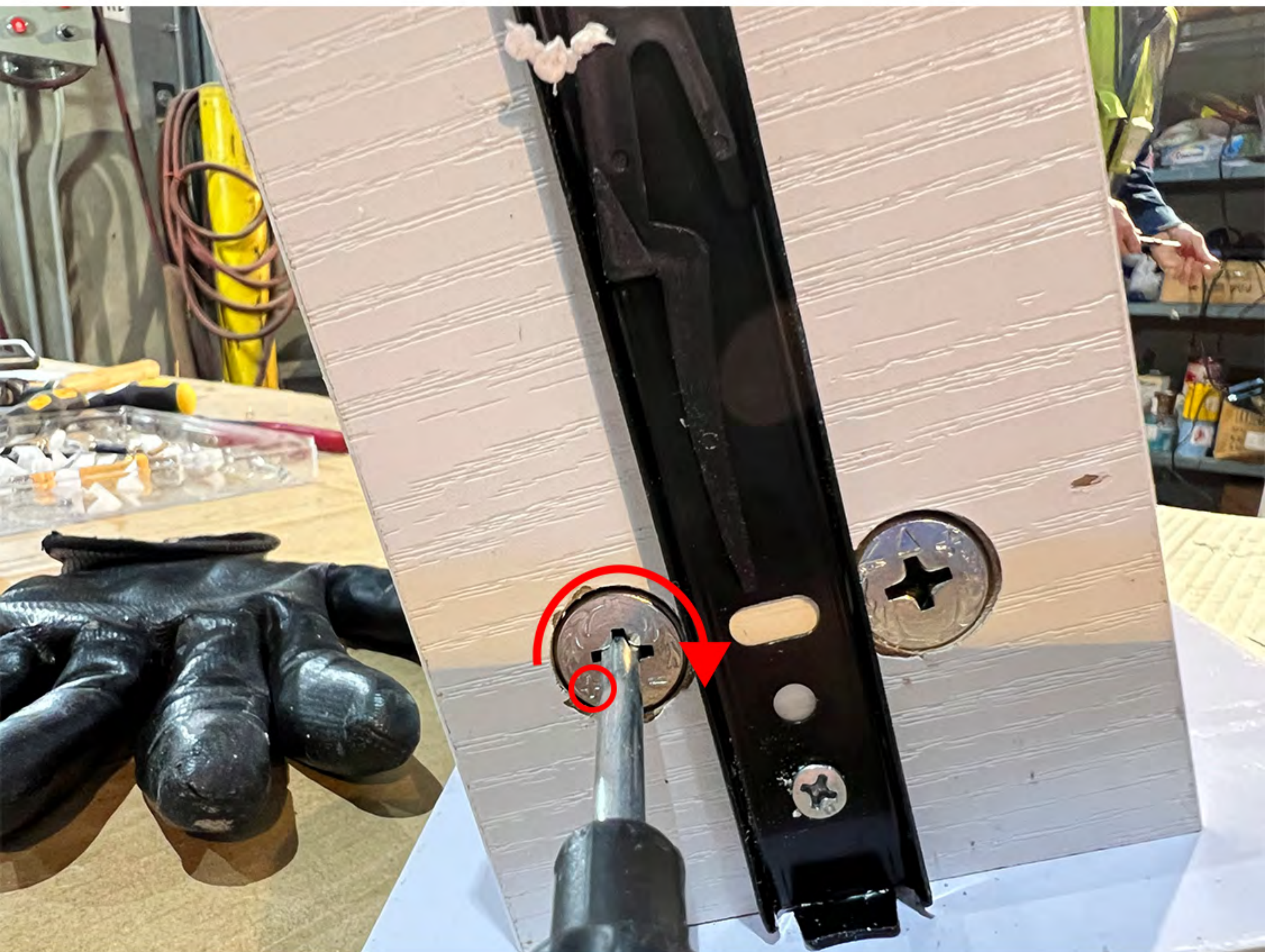
Installation Instruction



Instructions for using eccentric bolts:

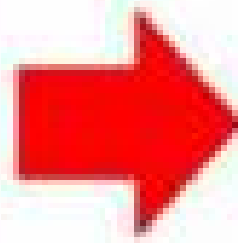
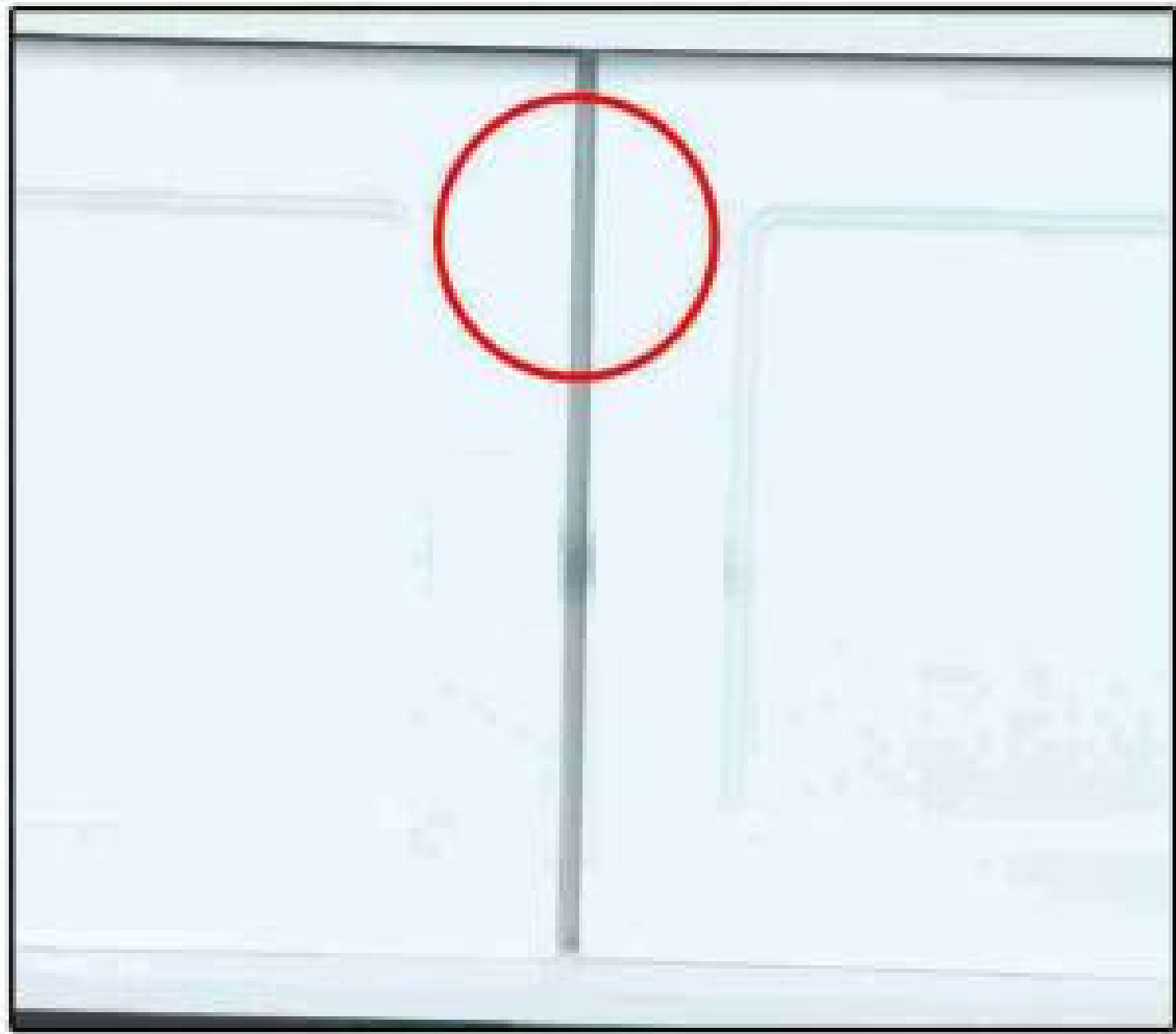


Example



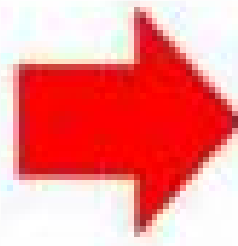
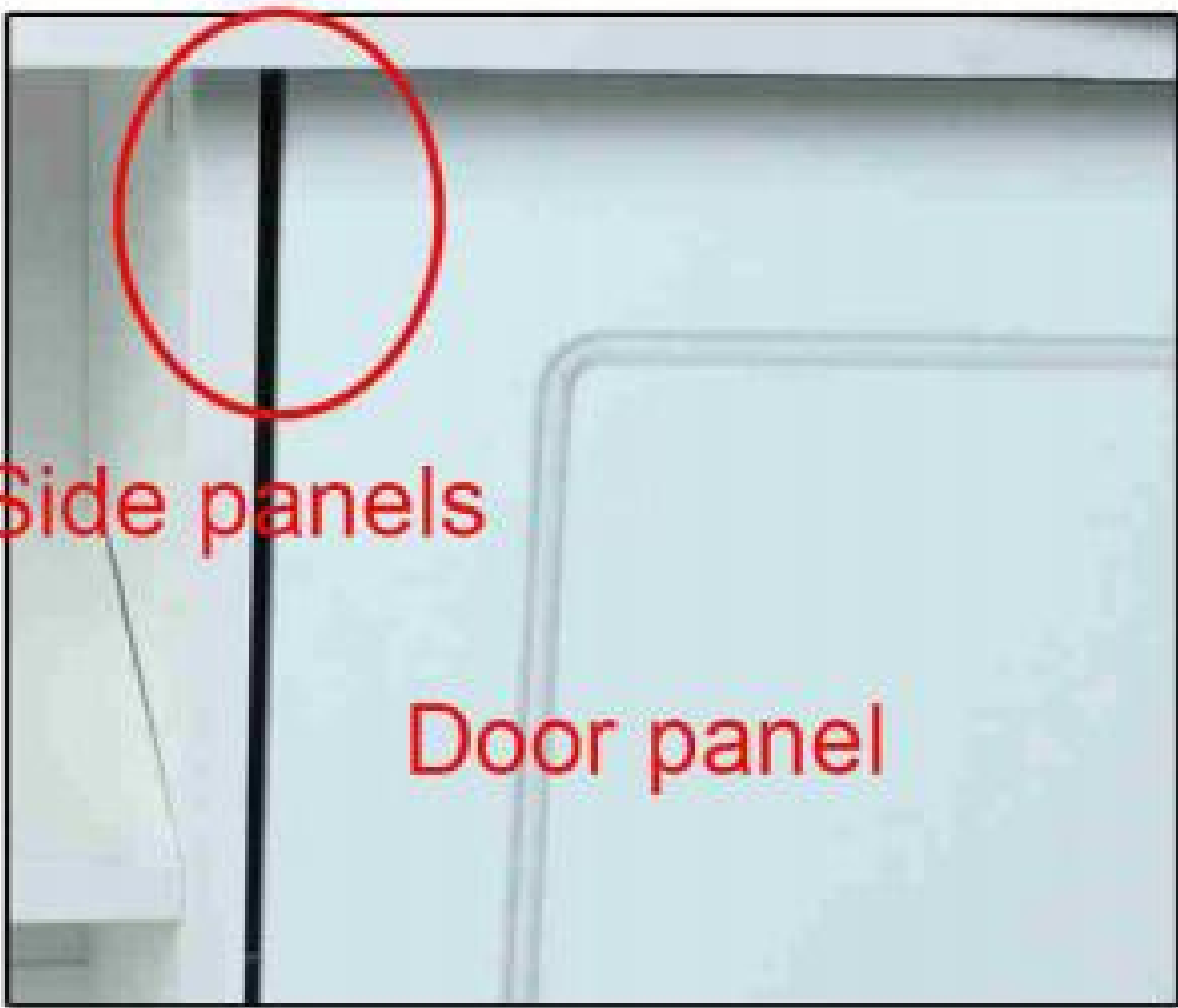
Door Panel Adjustment

Door gap is too big



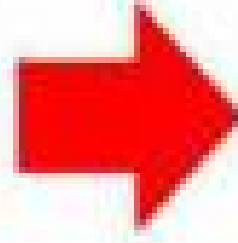
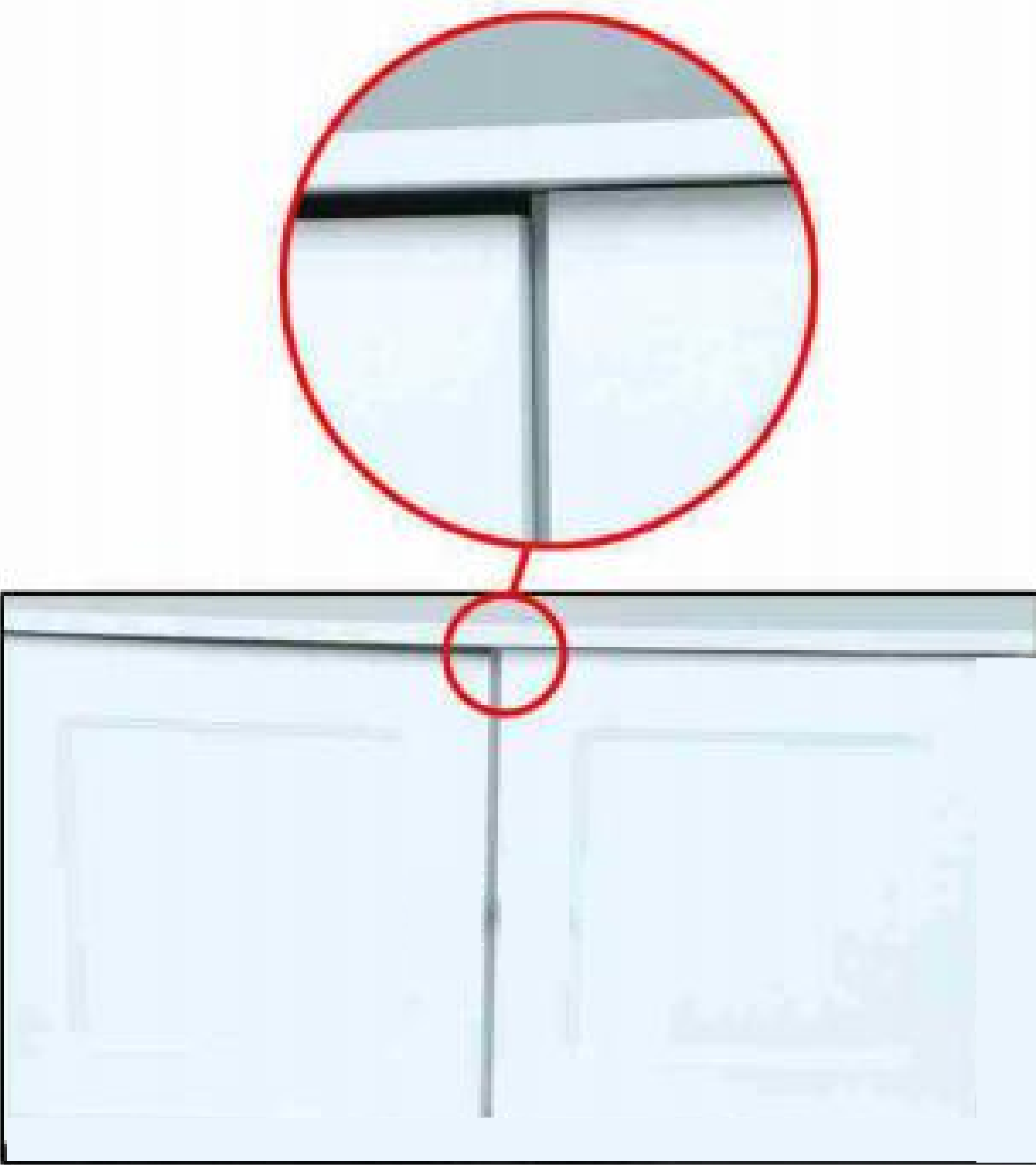
As shown in the picture, the screw that the screwdriver points to is used to adjust the door panel to move left and right, and turning it clockwise is to adjust the door panel to move toward the center.

The gap between the door panel and the side panel is too large



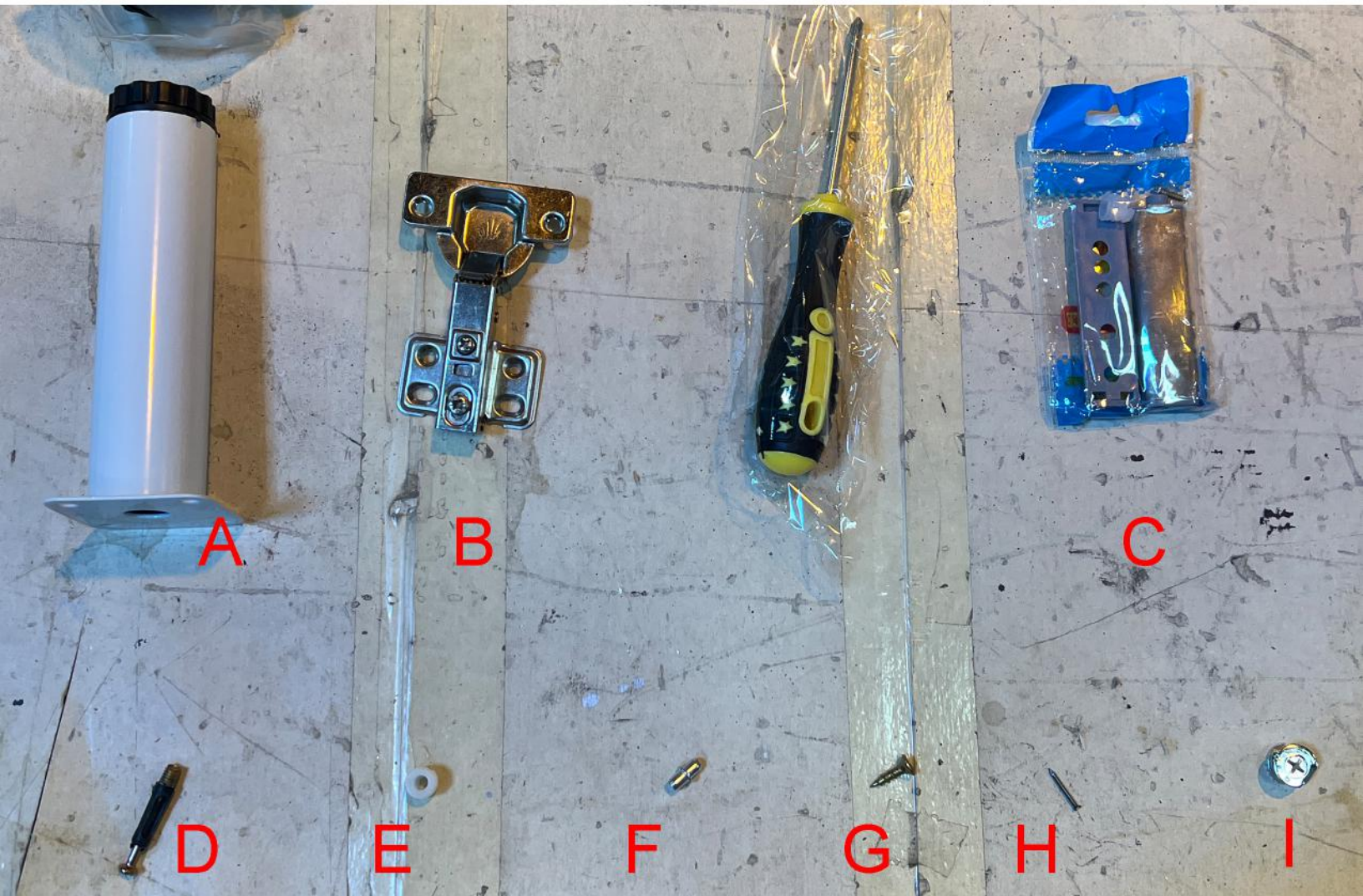
As shown in the figure, loosen the screw that the screwdriver points to, push the door panel in or pull it out, and then tighten it to solve the above problem.

Uneven door panel



As shown in the figure, loosen the screw that the screwdriver points to, push the lower door panel and hinge upward, and then tighten the screw. Push the upper door panel and hinge downward, and then tighten the screw.

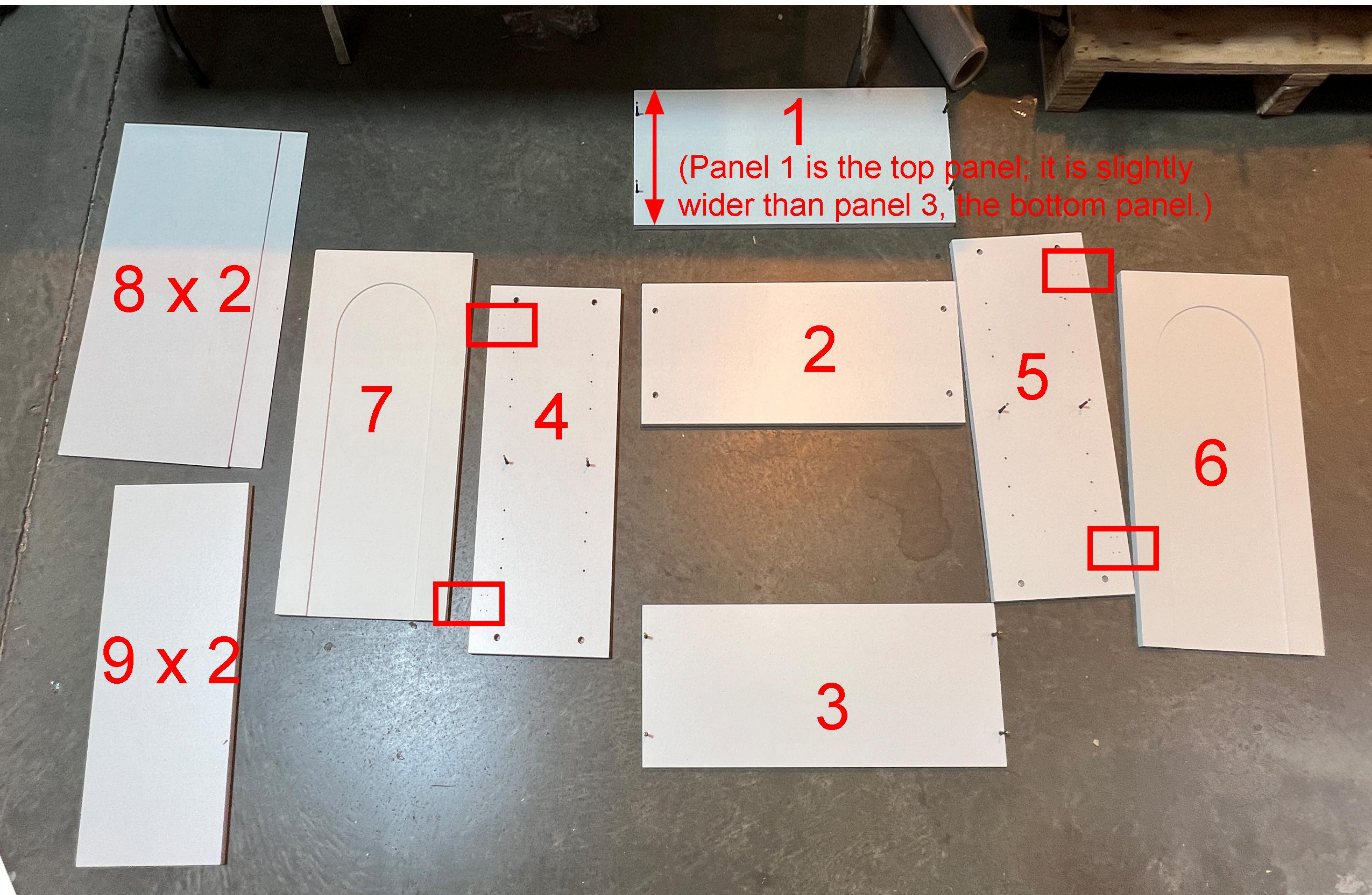
Hardware List



NOTE: An electric drill is highly recommended for installation.

Panel List

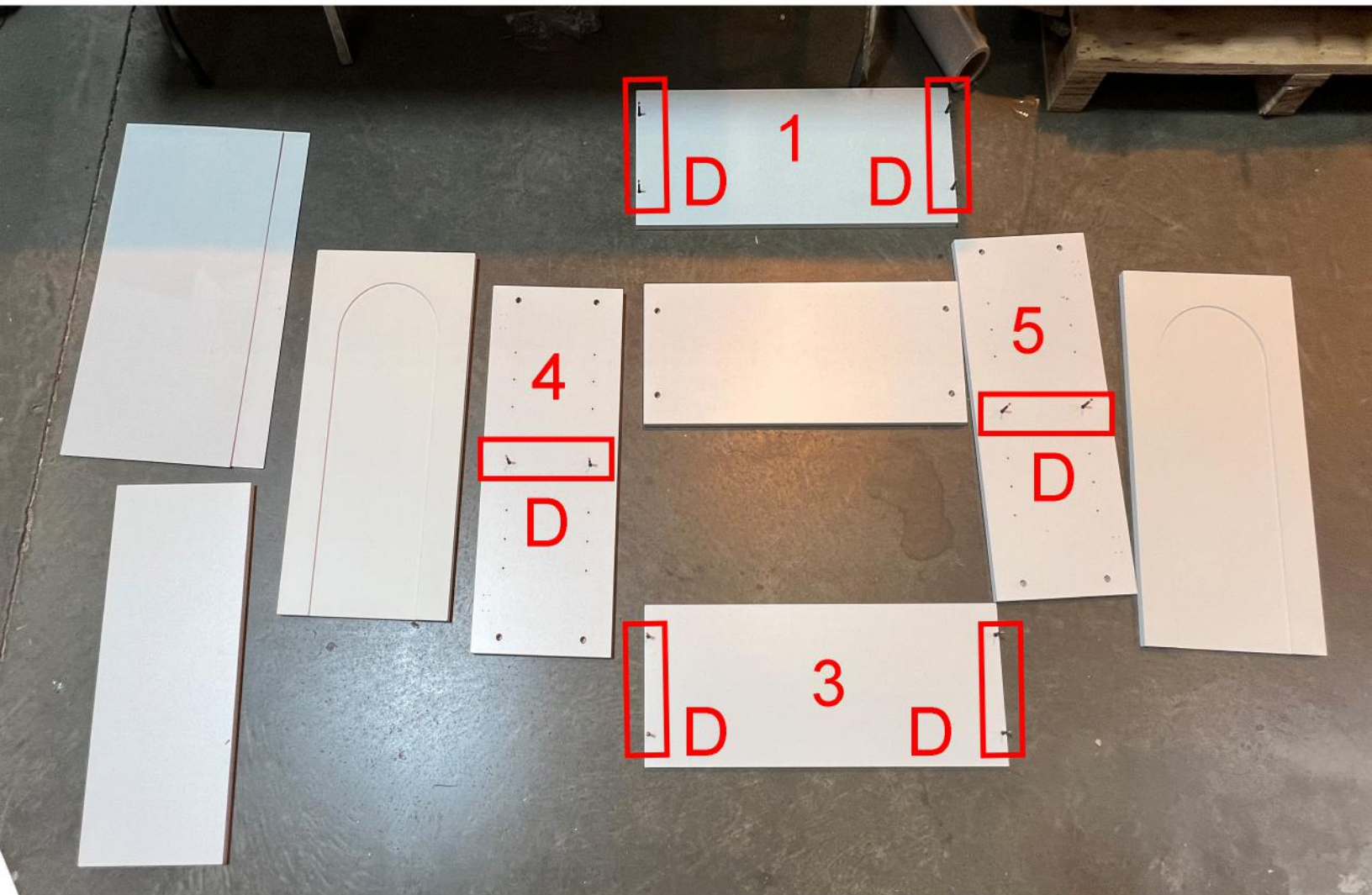
Top



Bottom

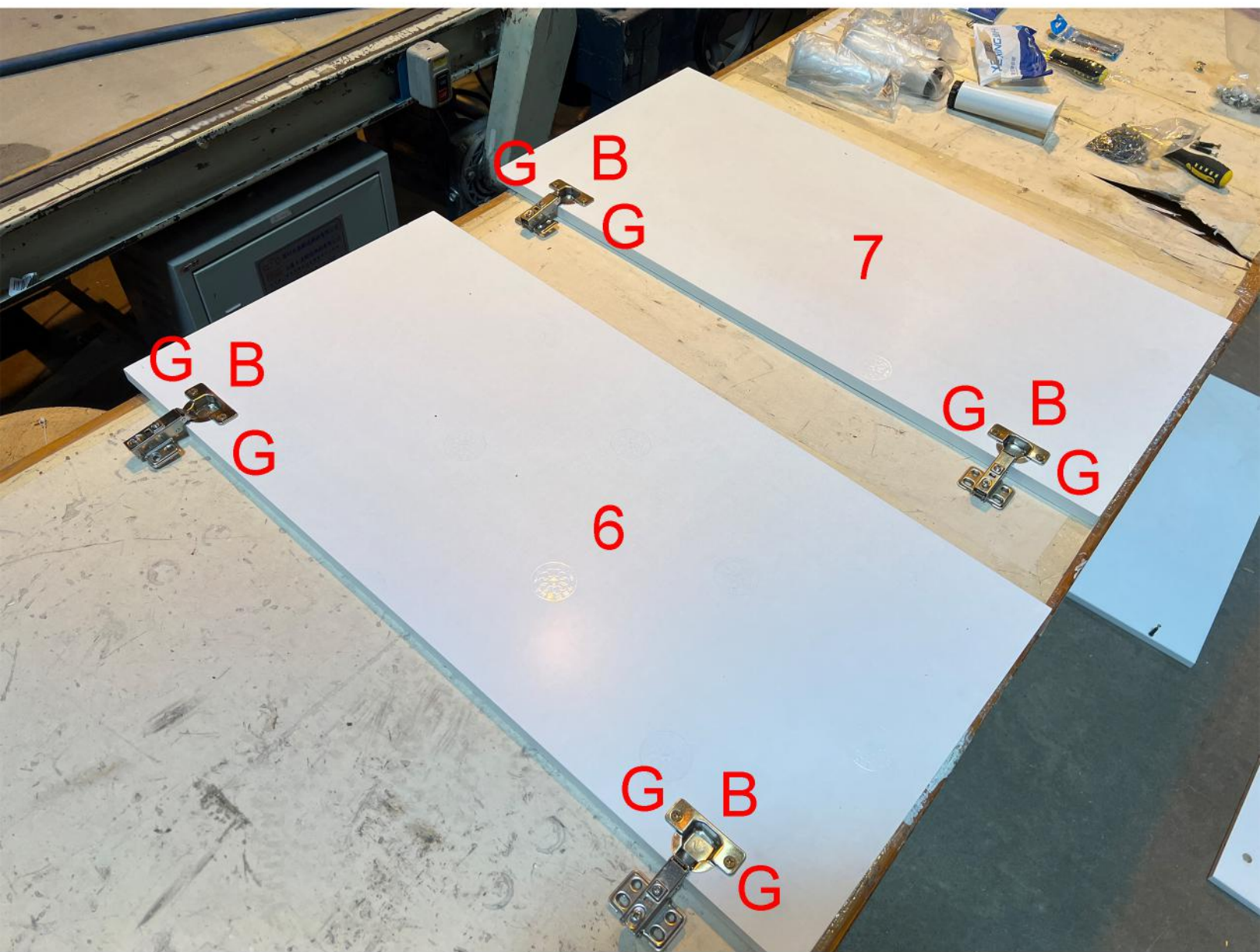
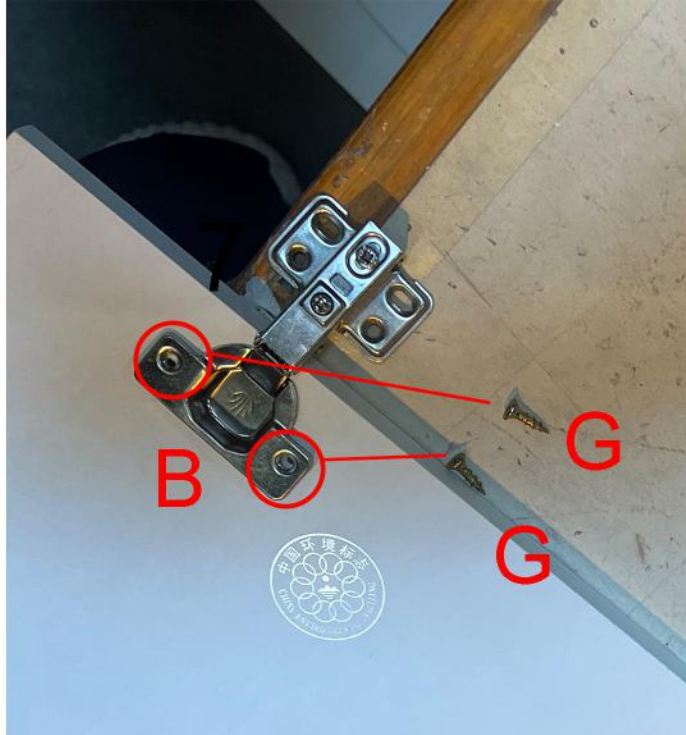
Pay attention to the pre-drilled holes on the panels and ensure correct positioning during assembly.

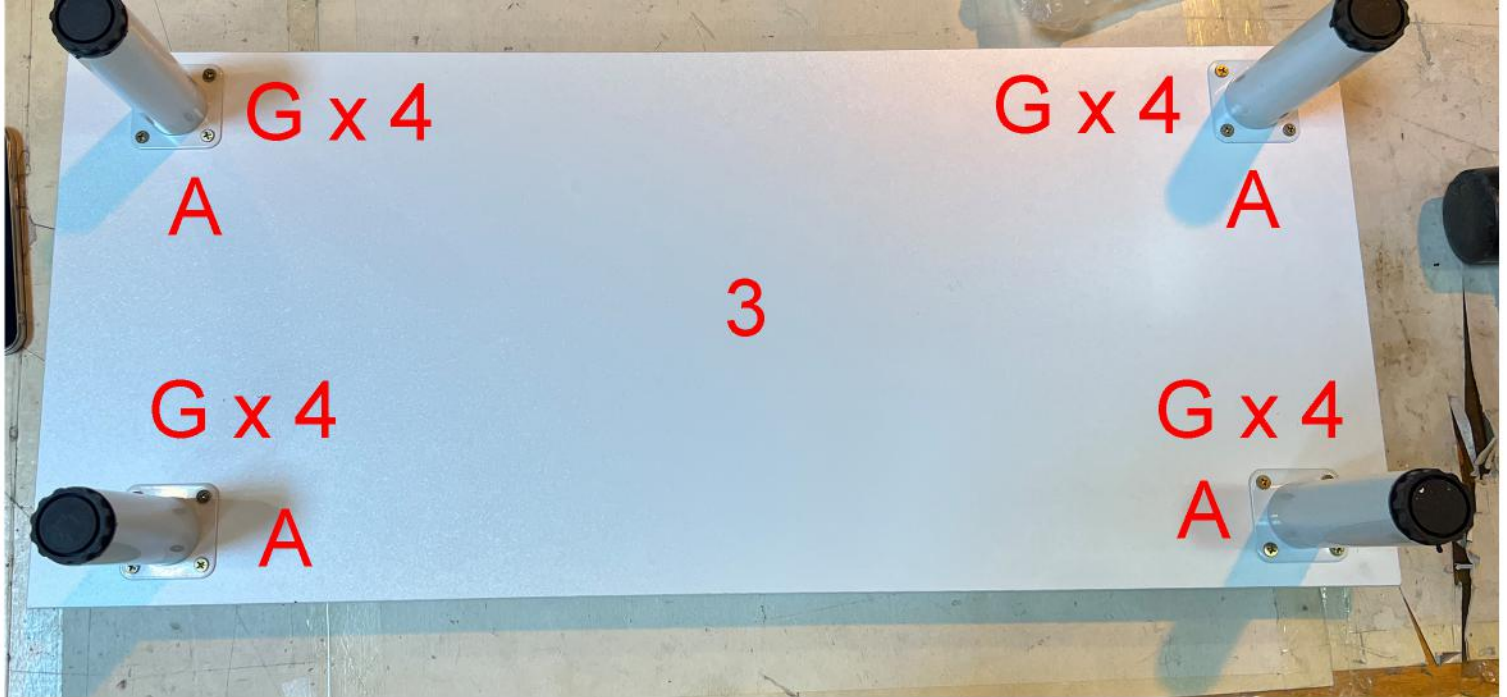
Top



Bottom

Tighten D into all white pre-installed inserts. Do not overtighten—stop once resistance is felt and the fitting is secure without looseness. Ensure vertical installation as much as possible.

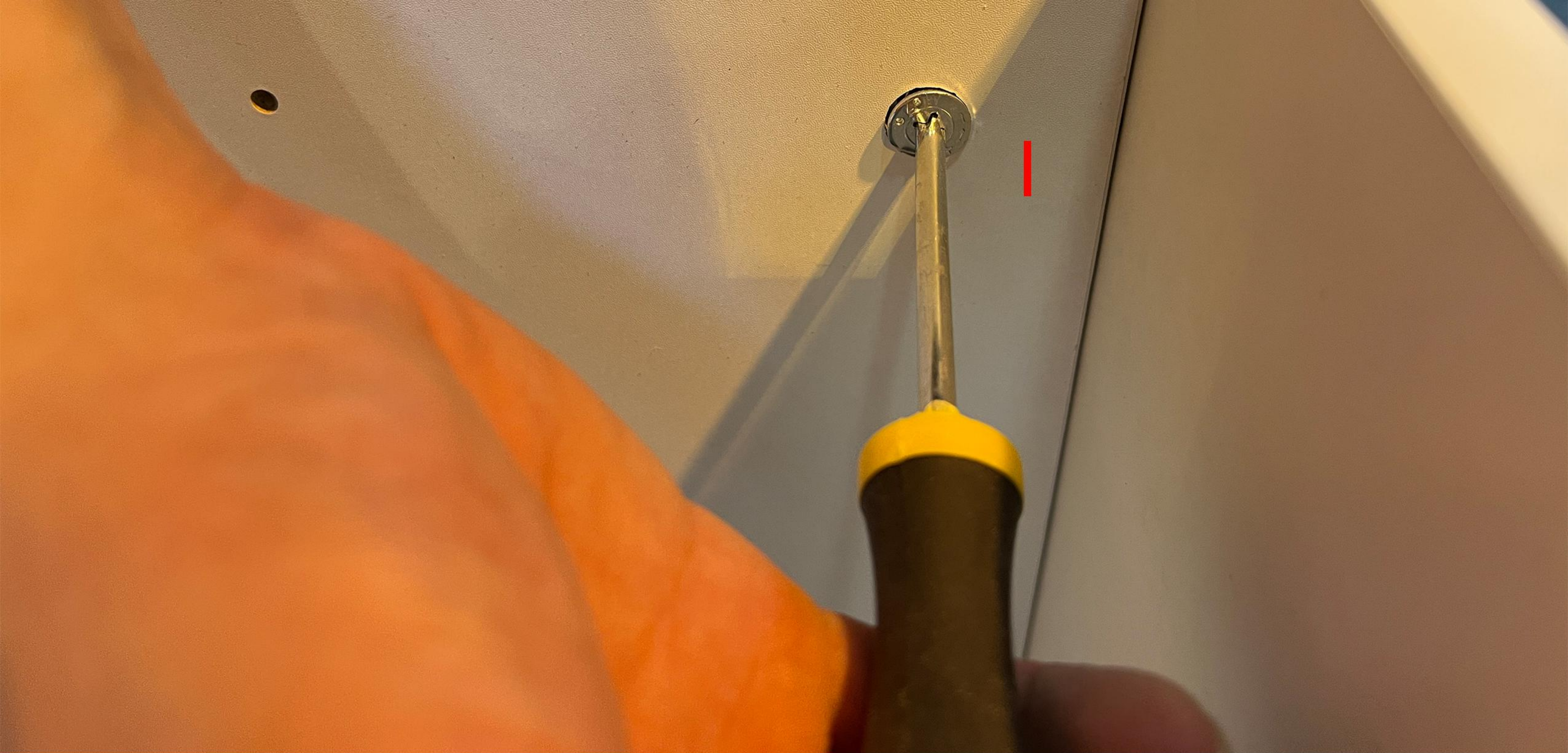




Use part G to fix part A under panel 3. There are no holes, so you need to screw it in yourself. Place A where you want it. A drill is recommended (not included).

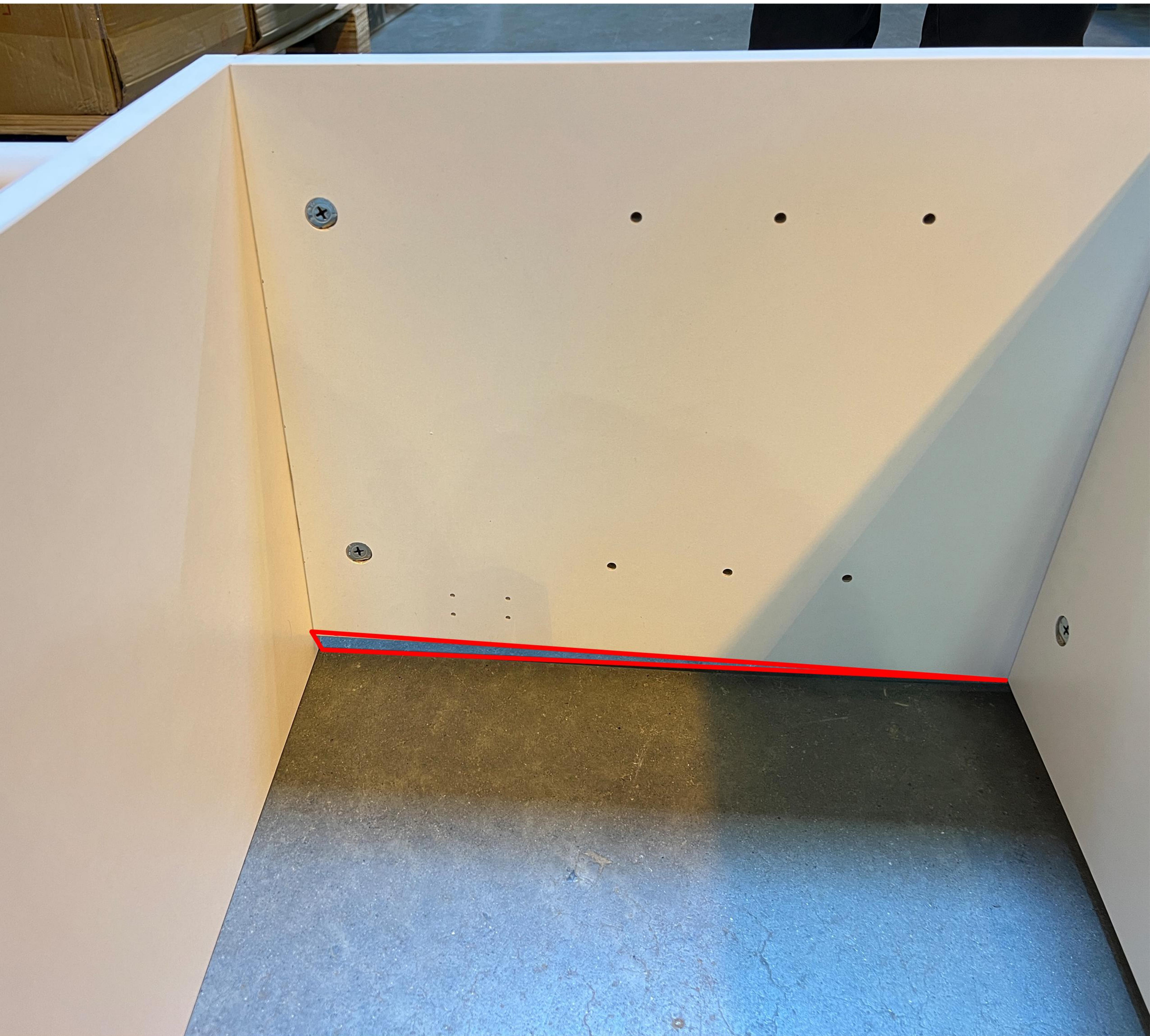
When connecting the panels, make sure the side with the small pre-drilled holes is facing down.

The connected panels should form a flat, even surface. If any unevenness or misalignment occurs, rotate or flip the panels to locate the correct positioning.

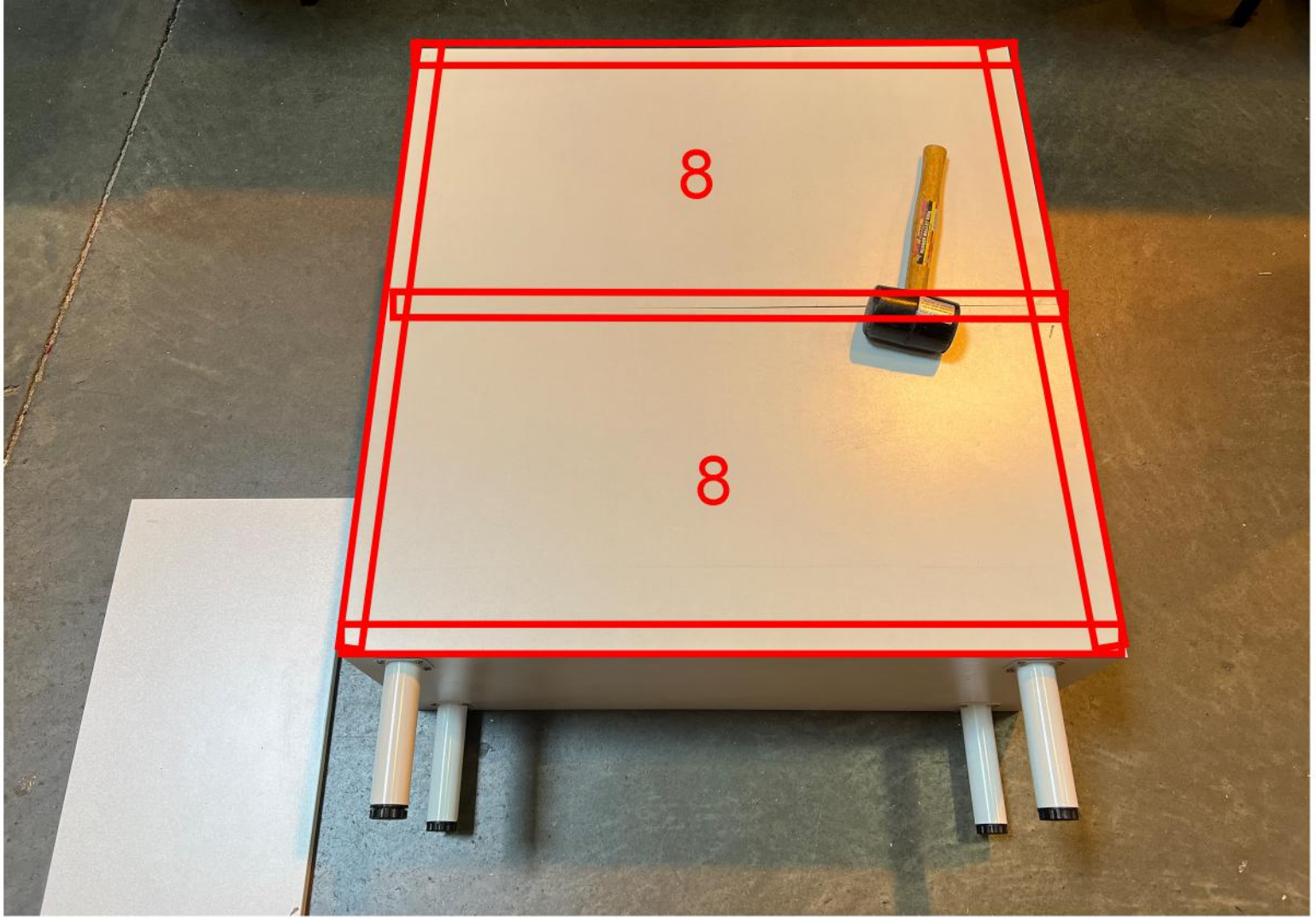


Secure part I into the large pre-drilled holes.
Refer to the "Instructions for Using Eccentric Bolts" for detailed guidance.

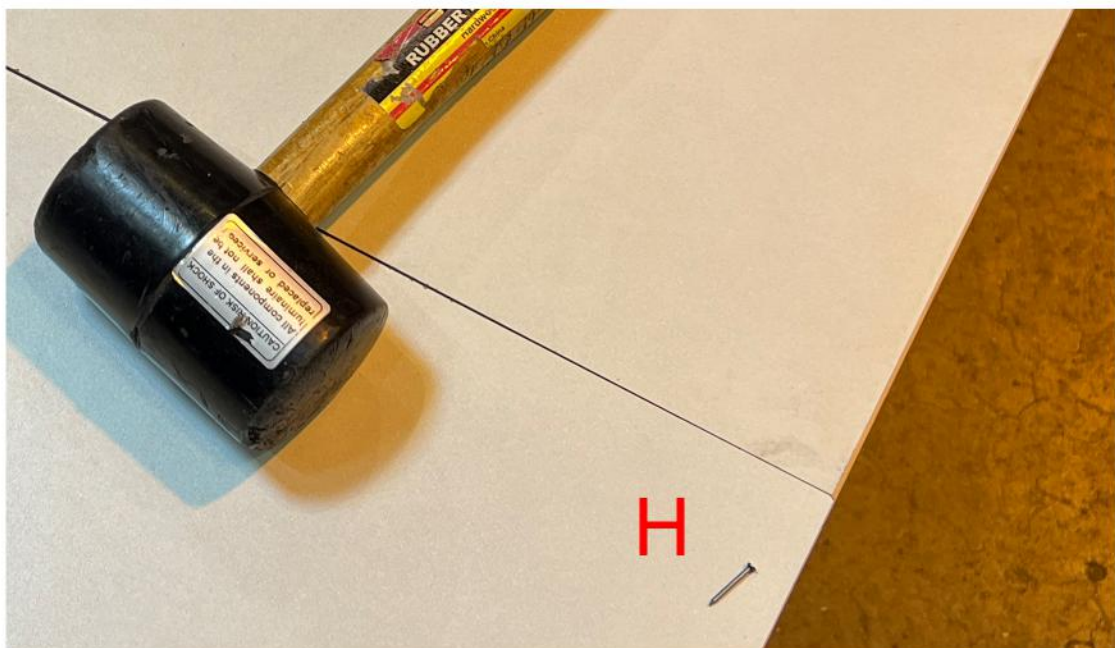




Inspect the Top for gaps. If none are visible, verify that all panels are oriented correctly.

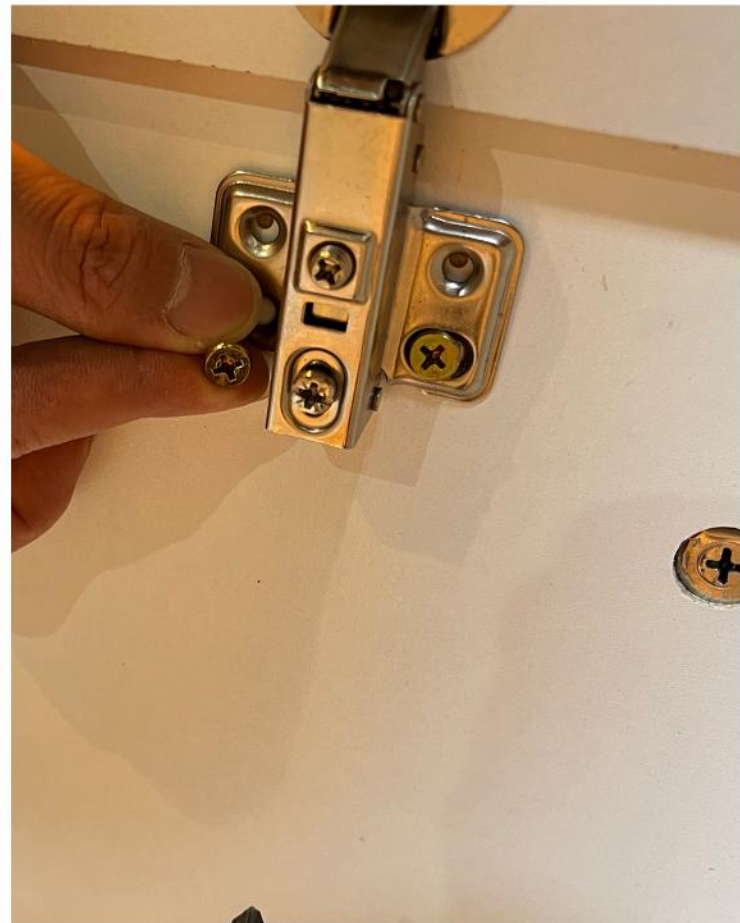


Place 8(the back panel) in the correct position, fully covering the back side of the cabinet. Make sure to leave enough space along the edges for proper fastening by H. 8 x 2 should be installed using the same procedure. (Hammer not included.)





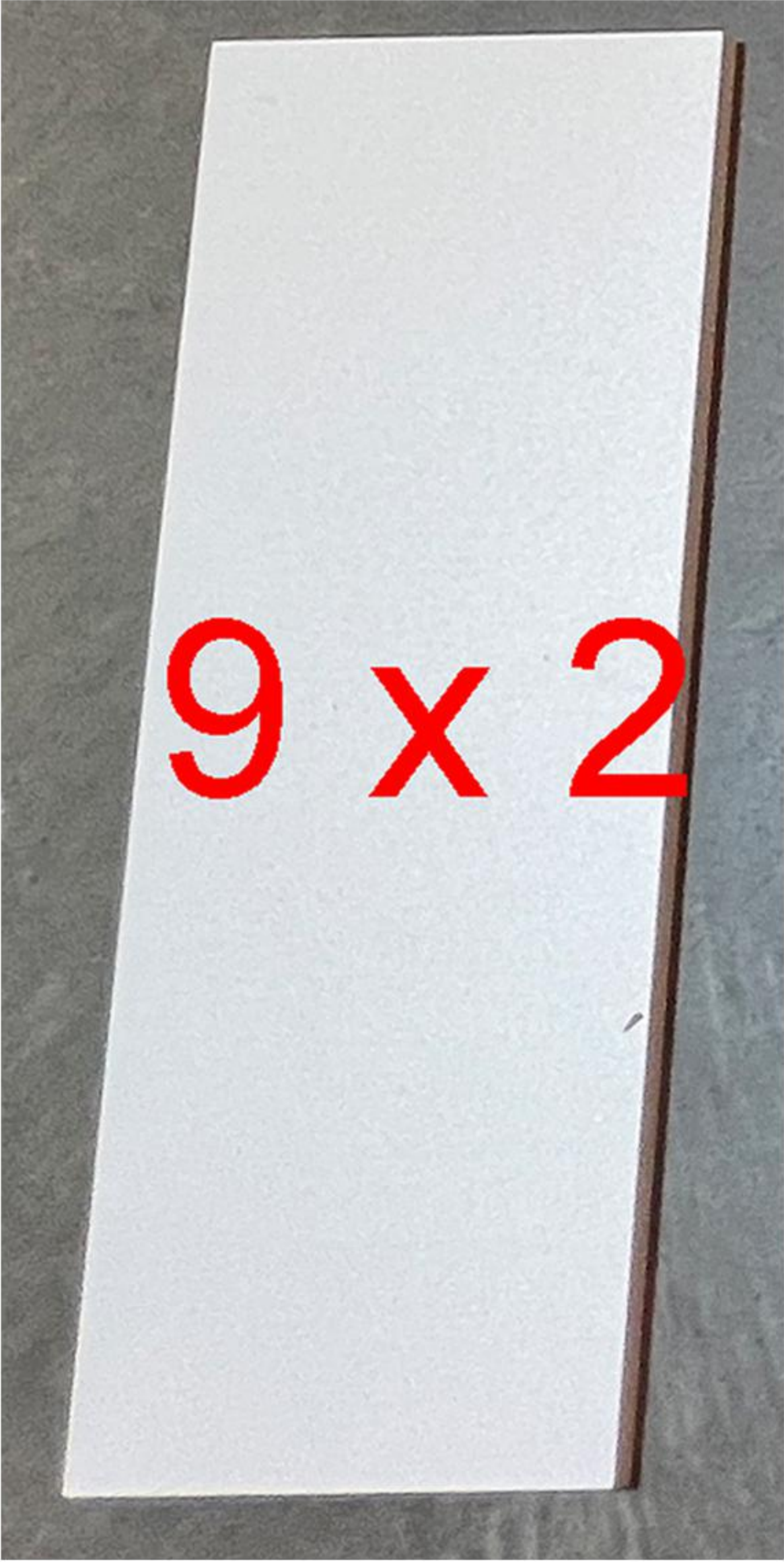
Gently flip the cabinet so the back is on the floor. The 4 small hole groups (4 per group) should face up. Attach doors 6 and 7. Use G to secure the other side of B.

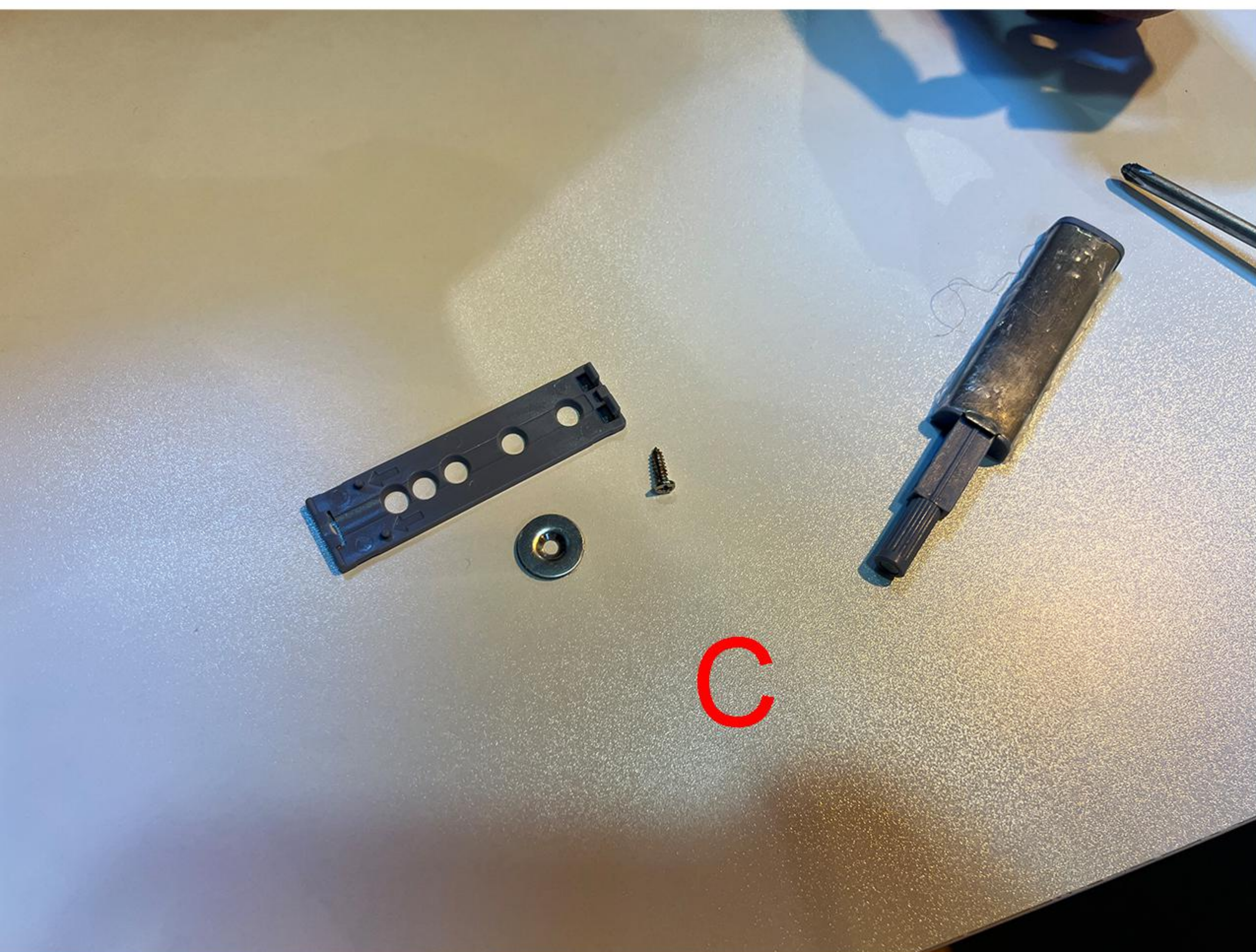


Install the two back screws first. Don't tighten yet — leave space to adjust. When all is correct, add and tighten all screws. You can adjust the door's height slightly—aim for even spacing rather than following the pre-drilled holes exactly.



Install part F as needed. Insert part I into the matching pre-drilled hole on the appropriate side panel. After installation, you can choose to add part 9.





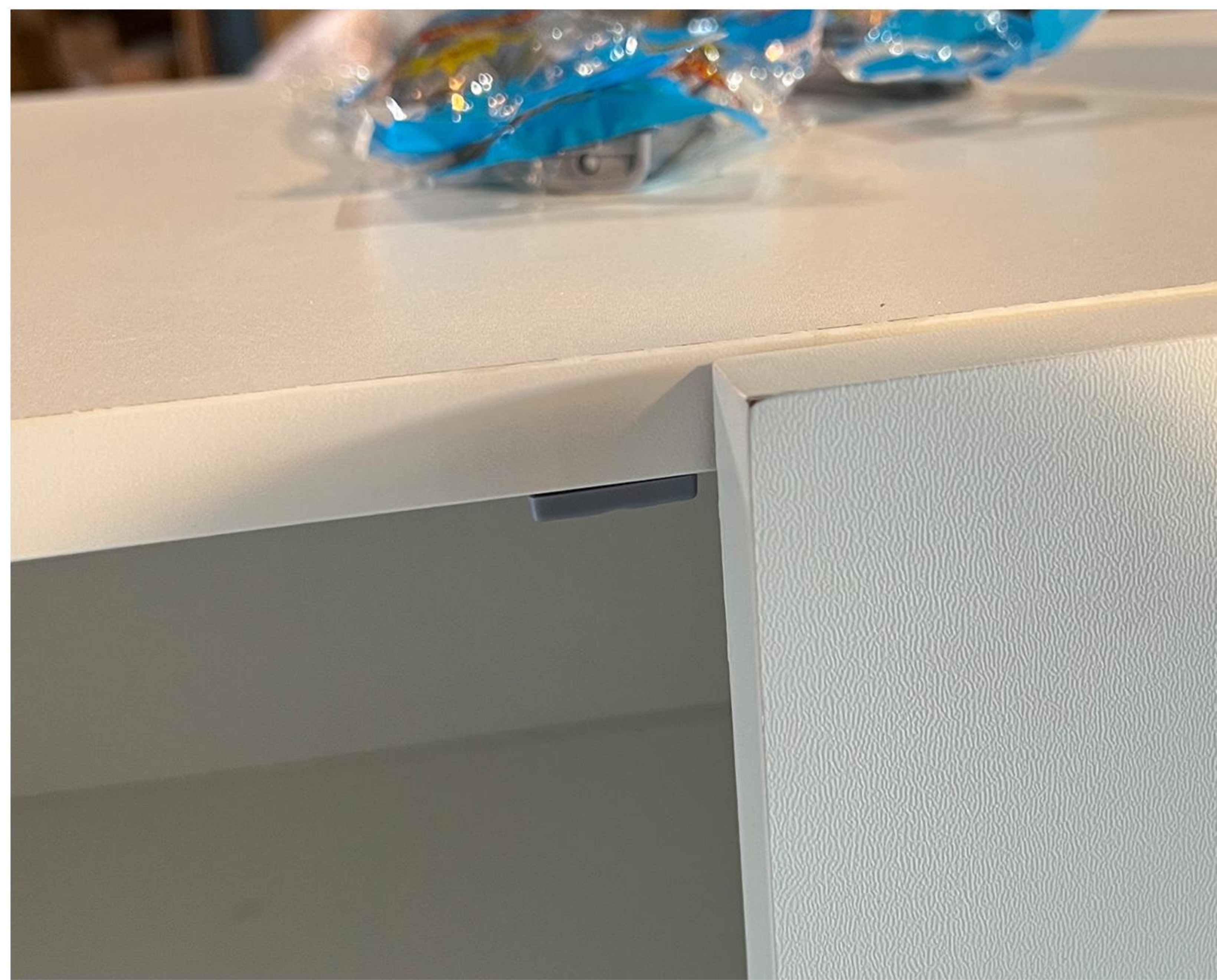
Installing part C is optional.

If you don't need the push-to-open function for the doors, you can skip this step.



Place part C at least 1.7 cm from the edge and secure it with part G. There are no pre-drilled holes here. Please install as needed. Position it first and test by closing the door. If it closes smoothly, secure it in place.

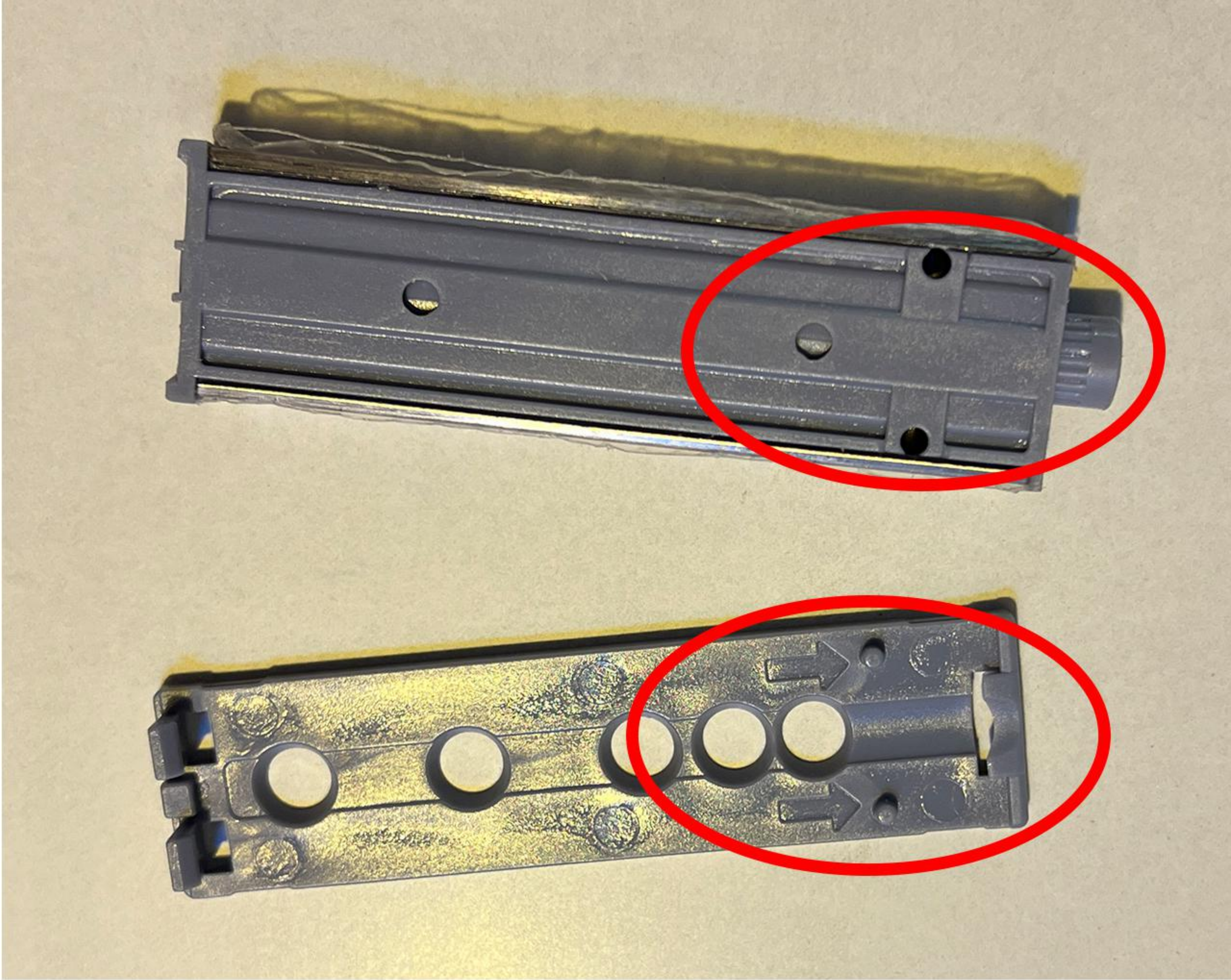
From the front view, offset the position about 3mm from the center line.



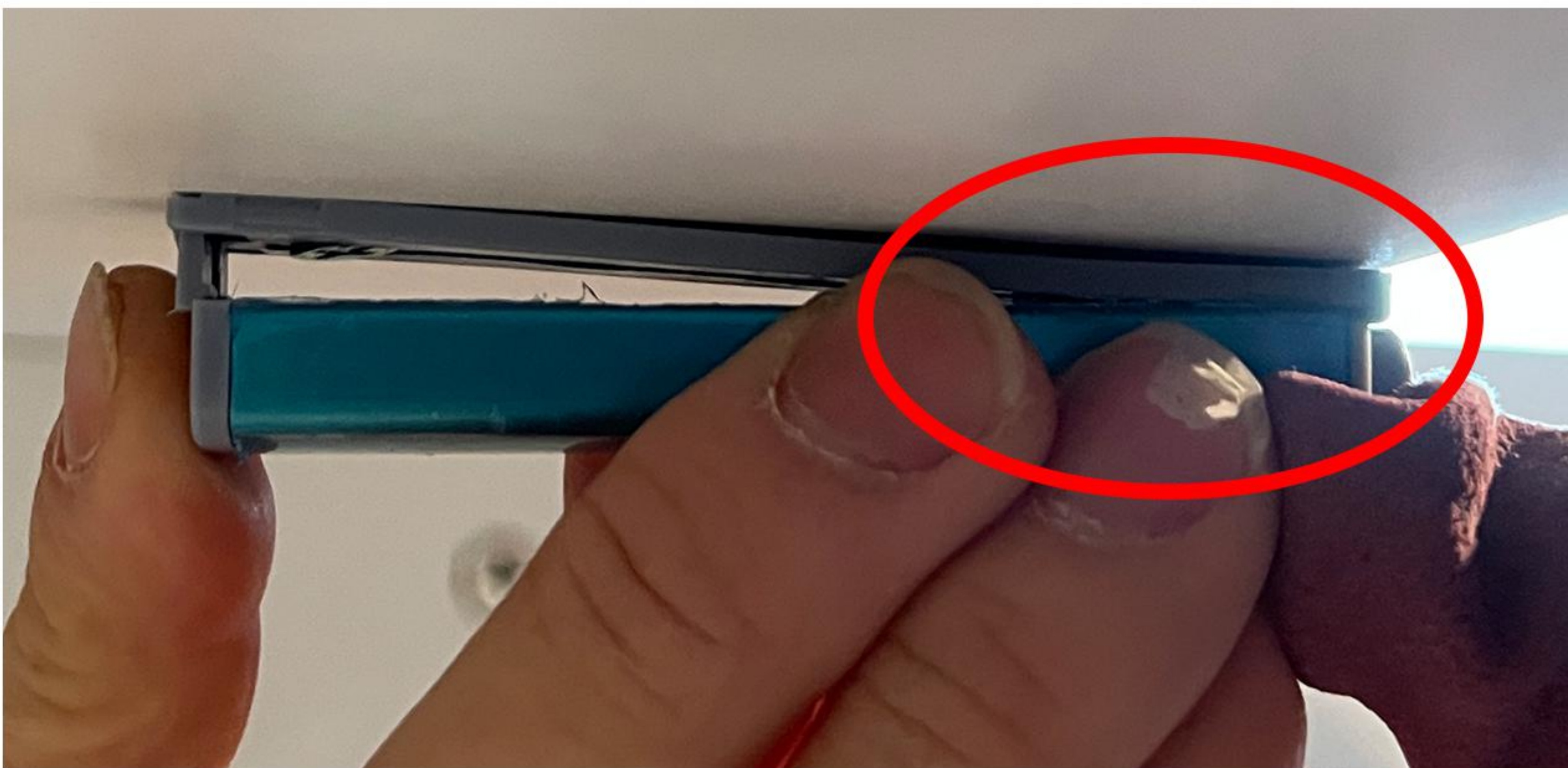


The small front cylinder is adjustable. You can find the right position during setup.





Note: To install the spring part of C, first aim it upward at the marked spot.



Then push it toward the edge.



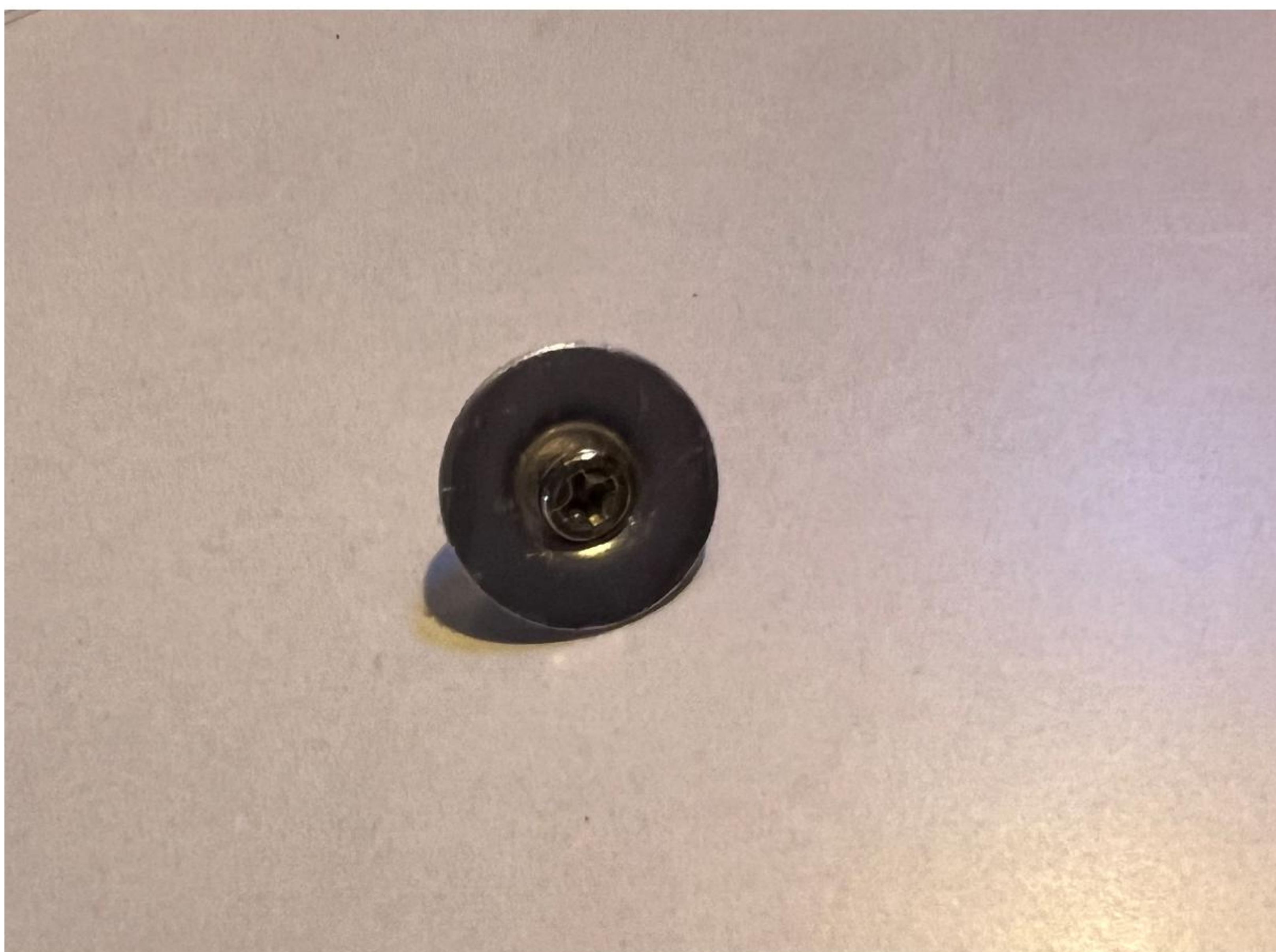
Then snap the bottom part into place.



Use the same method to install the left and right sides.



We suggest using the small round hollow metal piece to find a good spot on the door for magnetic connection before installing.



Just insert the small screw through the center to install it.



Install it in the right spot. No pre-drilled holes, so install as needed.